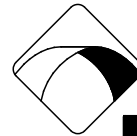
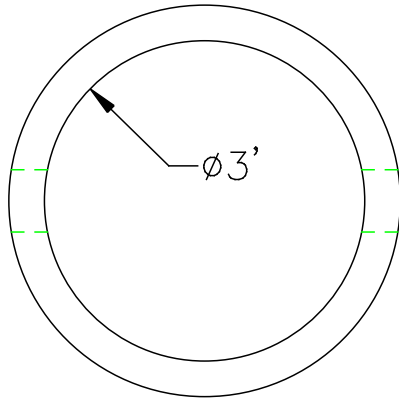
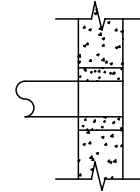


# 3' DIA ELECTRIC MANHOLE

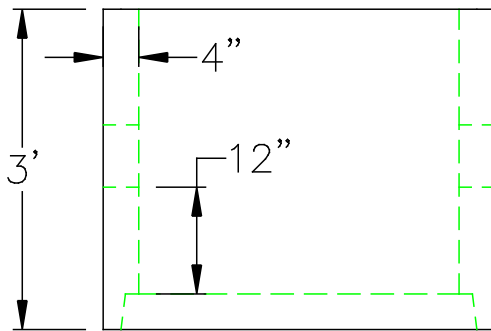
A3

MORTAR BY CONTRACTOR



**NPCA**

Precast ... The Concrete Solution.



PIPE TO MANHOLE CONNECTIONS SEE DETAIL A3 (7" HOLE TYP.)

|        | FLOOR    | VERT. FT |            |
|--------|----------|----------|------------|
| WEIGHT | 365 lbs. | 528 lbs. | FLAT TOP   |
| VOLUME |          | 70 gal.  | 1,000 lbs. |

BASE / FLOOR SLAB

4"

**DESIGN NOTES:**

1. MANUFACTURED TO MEET OR EXCEED MASS D.P.W. STANDARD DRAWING SD2-010
2. CONCRETE = 4,000 PSI. MINIMUM CEMENT PER ASTM C-478 (6.1)
3. REINFORCED STEEL COMFORMS TO LATEST ASTM A 185 SPECIFICATIONS. 0.12 SQ. IN / LINEAL FT. AND 0.12 SQ. IN (BOTH WAYS) BASE BOTTOM
4. STEEL REINFORCEMENT TO MEET OR EXCEED AASHTO HS-20 LOADING



SCITUATE RAY PRECAST  
120 CLAY PIT ROAD  
MARSHFIELD, MA 02050  
PHONE # 1-800-440-0009  
FAX # 781-837-4320

CONTRACTOR:

JOB NAME:

DATE:

DRAWING: SRP-D3

DRAWING BY: C.J. SCOTT

[WWW.SCITUATECOMPANIES.COM](http://WWW.SCITUATECOMPANIES.COM)