

GRAVIX

DOT Precast Wall System



DESIGN INNOVATION:

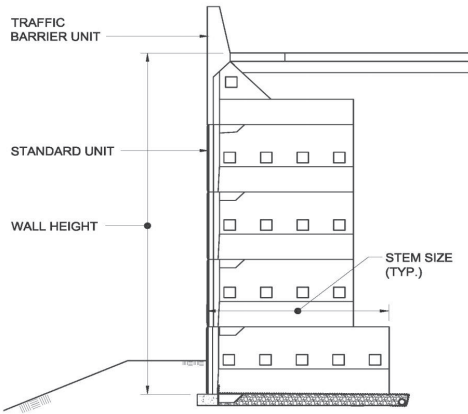
- Minimum Excavation Required
(Typically 50% Wall Height)
- Slot Construction Available
(Eliminates Temporary Shoring)
- Nonselect Backfill
- Integrated TL-4 Traffic Barrier



EARTH WALL PRODUCTS

earthwallproducts.com

PH 678.594.3451



Roadway Surchage, Backfill Unit Weight $\gamma = 120$ PCF

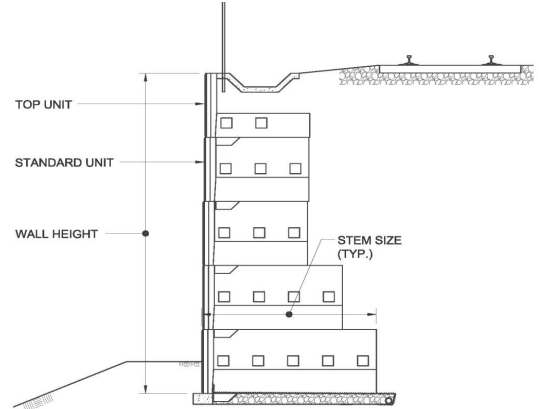
$\Phi = 30^\circ$ Soil Backfill

Wall Height	TB	8'	10'	12'	14'	16'	18'	20'
4.0'	1							
8.0'	1	1						
12.0'	1	2						
16.0'	1	3						
20.0'	1	3	2					
24.0'	1	2	1	2				
28.0'	1	1	2	1	2			
32.0'	1	1	1	2	1	2		
36.0'	1	1	1	2	1	1	2	
40.0'	1	1	1	1	2	1	1	2

$\Phi = 36^\circ$ Gravel Backfill

Wall Height	TB	8'	10'	12'	14'	16'	18'	20'
4.0'	1							
8.0'	1	1						
12.0'	1	2						
16.0'	1	3						
20.0'	1	4						
24.0'	1	4	1					
28.0'	1	3	2	1				
32.0'	1	3	2	1	1			
36.0'	1	3	2	1	1	1		
40.0'	1	3	2	1	1	1	1	

The soils effective friction angle and unit weight as outlined above is assumed to be used within, behind and beneath the retaining wall.



Train Load, Backfill Unit Weight $\gamma = 120$ PCF

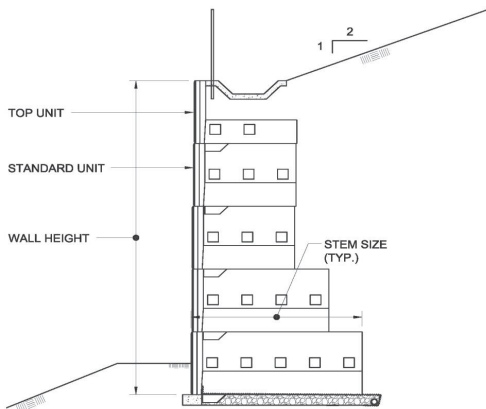
$\Phi = 30^\circ$ Soil Backfill

Wall Height	T/6'	8'	10'	12'	14'	16'	18'	20'
4.0'	1							
8.0'	1	1						
12.0'	2	1						
16.0'	2	1	1					
20.0'	2	1	1	1				
24.0'	1	1	1	1	1			
28.0'	1	1	1	1	1	1		
32.0'	1	1	1	1	1	1	1	
36.0'	NA							
40.0'	NA							

$\Phi = 36^\circ$ Gravel Backfill

Wall Height	T/6'	8'	10'	12'	14'	16'	18'	20'
4.0'	1							
8.0'	2							
12.0'	2	1						
16.0'	2	2						
20.0'	2	2	1					
24.0'	2	2	1	1				
28.0'	2	2	1	1	1			
32.0'	2	2	1	1	1	1		
36.0'	2	2	1	1	1	1	1	
40.0'	2	2	1	1	1	1	1	1

The soils effective friction angle and unit weight as outlined above is assumed to be used within, behind and beneath the retaining wall.



2:1 Backslope, Backfill Unit Weight $\gamma = 120$ PCF

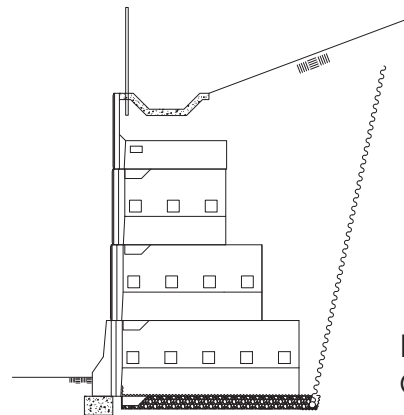
$\Phi = 30^\circ$ Soil Backfill

Wall Height	T/6'	8'	10'	12'	14'	16'	18'	20'
4.0'	1							
8.0'	2							
12.0'	1	2						
16.0'	1	1	1	1				
20.0'	1	1	1	1	1			
24.0'	1	1	0	1	1	2		
28.0'	1	1	1	1	0	1	1	1
32.0'	NA							
36.0'	NA							
40.0'	NA							

$\Phi = 36^\circ$ Gravel Backfill

Wall Height	T/6'	8'	10'	12'	14'	16'	18'	20'
4.0'	1							
8.0'	2							
12.0'	2	1						
16.0'	2	2						
20.0'	2	3						
24.0'	2	2	1	1				
28.0'	1	2	1	2	1			
32.0'	1	2	1	1	2	1		
36.0'	1	2	1	1	1	1	2	
40.0'	1	1	1	2	1	1	1	2

The soils effective friction angle and unit weight as outlined above is assumed to be used within, behind and beneath the retaining wall.



Roadside Barrier Face
Option Available

The information contained herein has been compiled by Earth Wall Products, LLC and to the best of our knowledge, accurately represents the Gravix product use in the applications which are illustrated. Final determination of the suitability for the use contemplated and its manner of use are the sole responsibility of the user. Final structural design and analysis shall be performed by a qualified engineer.

For assistance with stamped final designs by a professional engineer call 678.594.3451.