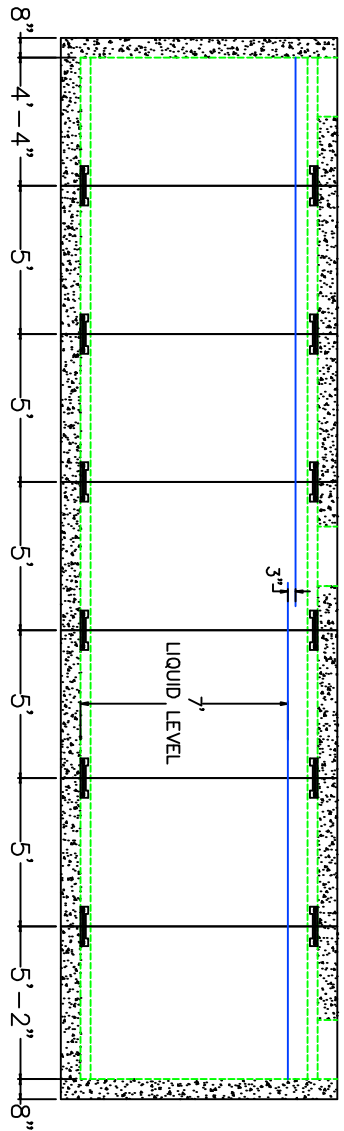
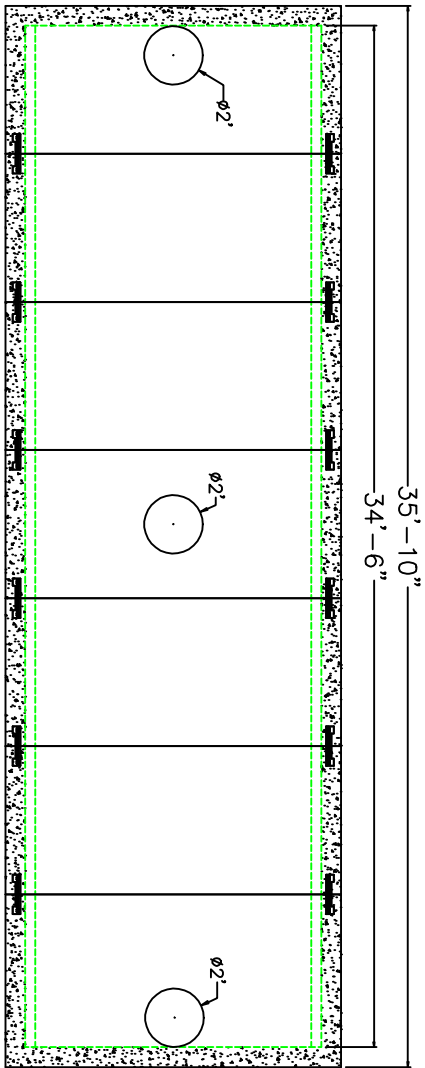




- DESIGN NOTES:
1. CONCRETE 5,000 PSI @ 28 DAYS
  2. REINFORCING ASTM A-615 GRADE 60 #5 REBAR 12" O.C.B.W. OR EQUAL
  3. STRUCTURE DESIGNED FOR H-20 LOADING
  4. EXTERIOR BITUMINOUS COATING APPLIED



SCITUATE  
COMPANIES

120 CLAY PIT ROAD  
MARSHFIELD, MA 02050  
PHONE # 1-800-440-0009  
FAX # 781-837-4320

CONTRACTOR:

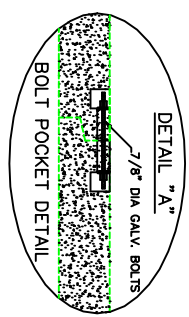
JOB NAME:

DATE: 9/21/2017

APPROVED BY:

DRAWING BY: JOHN KASPER

18,000 GALLON HOLDING TANK



END WALL	LINEAR FT
WEIGHT	10,300 lbs. 3,800 lbs.
VOLUME	525 gal.

