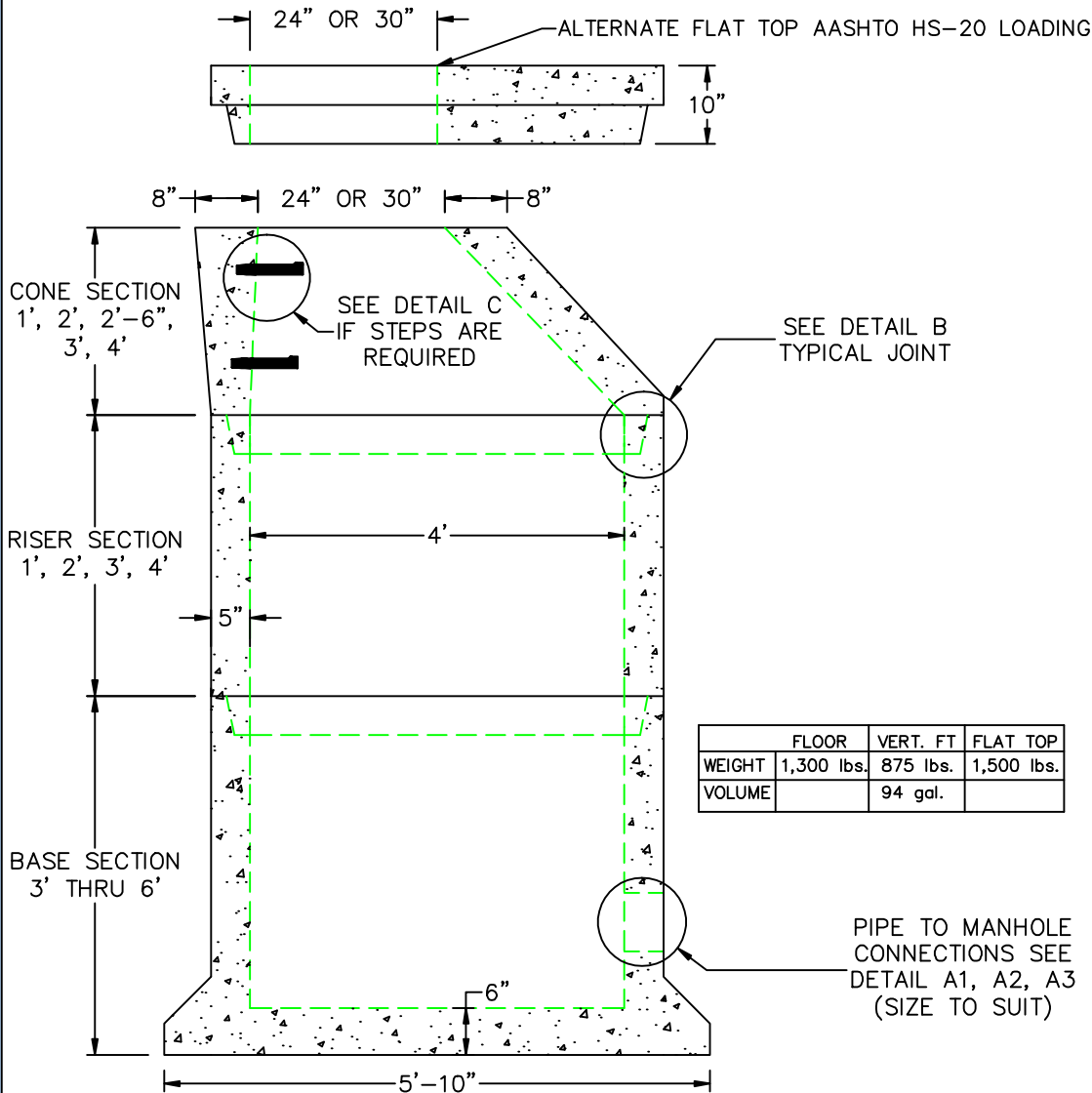


# 4'DIA DRAIN MANHOLE EXT. BASE



CONE SECTION  
1', 2', 2'-6",  
3', 4'

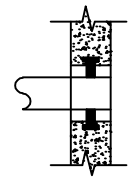
RISER SECTION  
1', 2', 3', 4'

BASE SECTION  
3' THRU 6'

	FLOOR	VERT. FT	FLAT TOP
WEIGHT	1,300 lbs.	875 lbs.	1,500 lbs.
VOLUME		94 gal.	

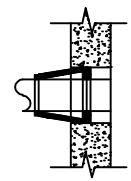
A1

COMPRESSION GASKET (CAST IN)



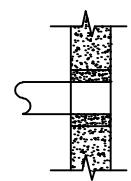
A2

FLEXIBLE SLEEVE



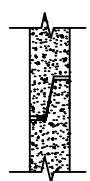
A3

NON SHRINK GROUT BY CONTRACTOR



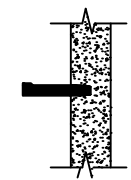
B

BUTYL RUBBER SECTION JOINT



C

POLYPROPYLENE MANHOLE STEPS  
12" O.C.



**DESIGN NOTES:**

1. MANUFACTURED TO MEET OR EXCEED: ASTM C-478 & AASHTO M 199 SPECS.
2. CONCRETE = 5,000 PSI. MINIMUM CEMENT PER ASTM C-478 (6.1)
3. REINFORCED STEEL CONFORMS TO LATEST ASTM A 185 SPECIFICATIONS.  
0.12 SQ. IN / LINEAL FT. AND 0.12 SQ. IN (BOTH WAYS) BASE BOTTOM
4. STEEL REINFORCEMENT TO MEET OR EXCEED AASHTO HS-20 LOADING
5. MANHOLE STEPS MEET LATEST OSHA REGULATION 29 CFR1910.27, SECTION 16 OF ASTM SPECIFICATION C478 AND SECTION 10 OF ASTM SPECIFICATION C497
6. BUTYL RUBBER JOINT SEALANT PER ASTM C-990 & ASHTO M-198
7. WATER PROOFING PER CONTRACT SPECS. AS REQUIRED



SCITUATE RAY PRECAST  
120 CLAY PIT ROAD  
MARSHFIELD, MA 02050  
PHONE # 1-800-440-0009  
FAX # 781-837-4320



CONTRACTOR:		JOB NAME:	
DATE:	DDRAWING: SRP-DMH4-EB	DRAWING BY: C.J. SCOTT	