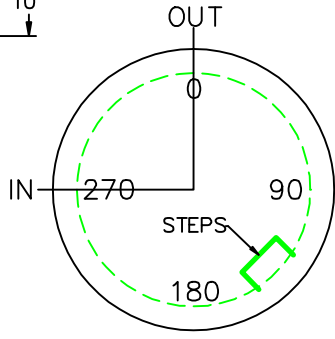
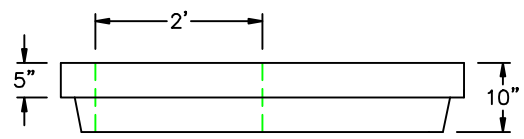
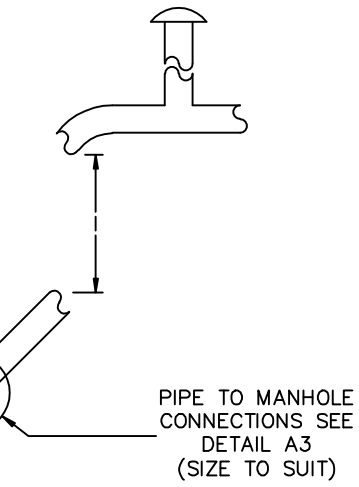
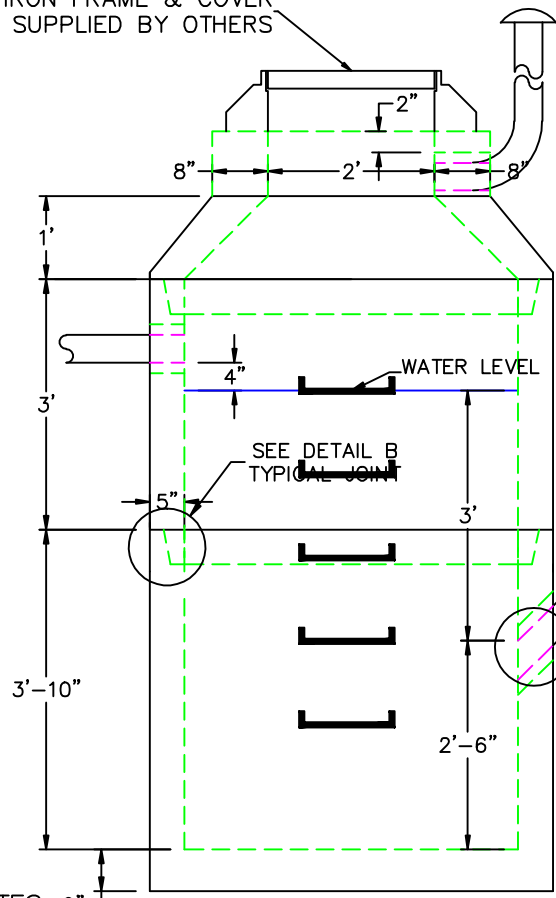


4" INLET 4' DIA GAS TRAP



CAST IRON FRAME & COVER
SUPPLIED BY OTHERS



A3

NON SHRINK GROUT
BY CONTRACTOR

B

BUTYL RUBBER
SECTION JOINT

C

POLYPROPYLENE
MANHOLE STEPS
12" O.C.

	FLOOR	VERT. FT	FLAT TOP
WEIGHT	930 lbs.	875 lbs.	1,500 lbs.
VOLUME		94 gal.	

- DESIGN NOTES: 6"
1. MANUFACTURED TO MEET OR EXCEED: ASTM C-478 & AASHTO M 199 SPECS.
 2. CONCRETE = 4,000 PSI. MINIMUM CEMENT PER ASTM C-478 (6.1)
 3. REINFORCED STEEL CONFORMS TO LATEST ASTM A 185 SPECIFICATIONS.
0.12 SQ. IN / LINEAL FT. AND 0.12 SQ. IN (BOTH WAYS) BASE BOTTOM
 4. STEEL REINFORCEMENT TO MEET OR EXCEED AASHTO HS-20 LOADING
 5. MANHOLE STEPS MEET LATEST OSHA REGULATION 29 CFR1910.27, SECTION 16 OF ASTM SPECIFICATION C478 AND SECTION 10 OF ASTM SPECIFICATION C497
 6. BUTYL RUBBER JOINT SEALANT PER ASTM C-990 & ASHTO M-198
 7. EXTERIOR TO BE COATED WITH SCITUATE COMPANIES STANDARD DAMPROOFING



SCITUATE RAY PRECAST
120 CLAY PIT ROAD
MARSHFIELD, MA 02050
PHONE # 1-800-440-0009
FAX # 781-837-4320

CONTRACTOR:		JOB NAME:	
DATE:	DRAWING: SRP-GT4	DRAWING BY: JOHN KASPER	