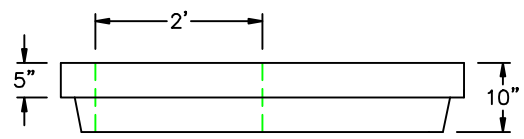
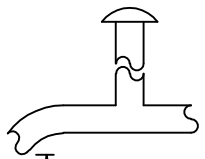
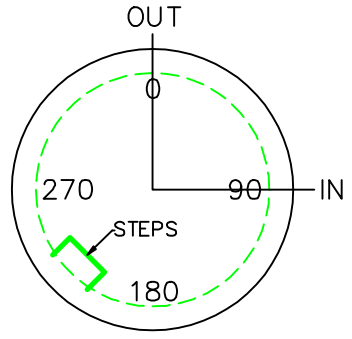
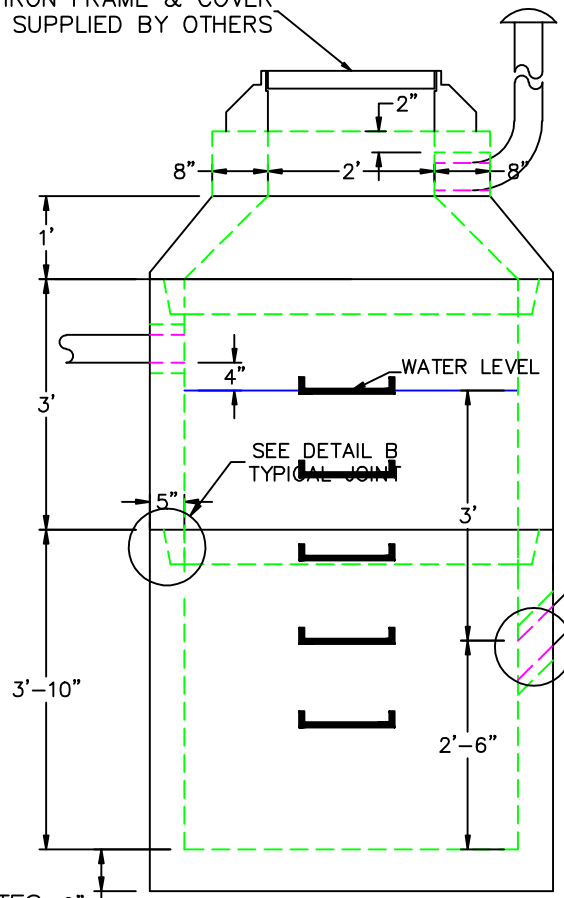


4" INLET 4' DIA GAS TRAP



CAST IRON FRAME & COVER
SUPPLIED BY OTHERS



PIPE TO MANHOLE
CONNECTIONS SEE
DETAIL A3
(SIZE TO SUIT)

| | FLOOR | VERT. FT | FLAT TOP |
|--------|----------|----------|------------|
| WEIGHT | 930 lbs. | 875 lbs. | 1,500 lbs. |
| VOLUME | | 94 gal. | |

A3

NON SHRINK GROUT
BY CONTRACTOR

B

BUTYL RUBBER
SECTION JOINT

C

POLYPROPYLENE
MANHOLE STEPS
12" O.C.

DESIGN NOTES: 6"

1. MANUFACTURED TO MEET OR EXCEED: ASTM C-478 & AASHTO M 199 SPECS.
2. CONCRETE = 4,000 PSI. MINIMUM CEMENT PER ASTM C-478 (6.1)
3. REINFORCED STEEL CONFORMS TO LATEST ASTM A 185 SPECIFICATIONS.
0.12 SQ. IN / LINEAL FT. AND 0.12 SQ. IN (BOTH WAYS) BASE BOTTOM
4. STEEL REINFORCEMENT TO MEET OR EXCEED AASHTO HS-20 LOADING
5. MANHOLE STEPS MEET LATEST OSHA REGULATION 29 CFR1910.27, SECTION 16
OF ASTM SPECIFICATION C478 AND SECTION 10 OF ASTM SPECIFICATION C497
6. BUTYL RUBBER JOINT SEALANT PER ASTM C-990 & ASHTO M-198
7. EXTERIOR TO BE COATED WITH SCITUATE COMPANIES STANDARD DAMPROOFING



SCITUATE RAY PRECAST
120 CLAY PIT ROAD
MARSHFIELD, MA 02050
PHONE # 1-800-440-0009
FAX # 781-837-4320

| | | | |
|-------------|------------------|-------------------------|--|
| CONTRACTOR: | | JOB NAME: | |
| DATE: | DRAWING: SRP-GT4 | DRAWING BY: JOHN KASPER | |