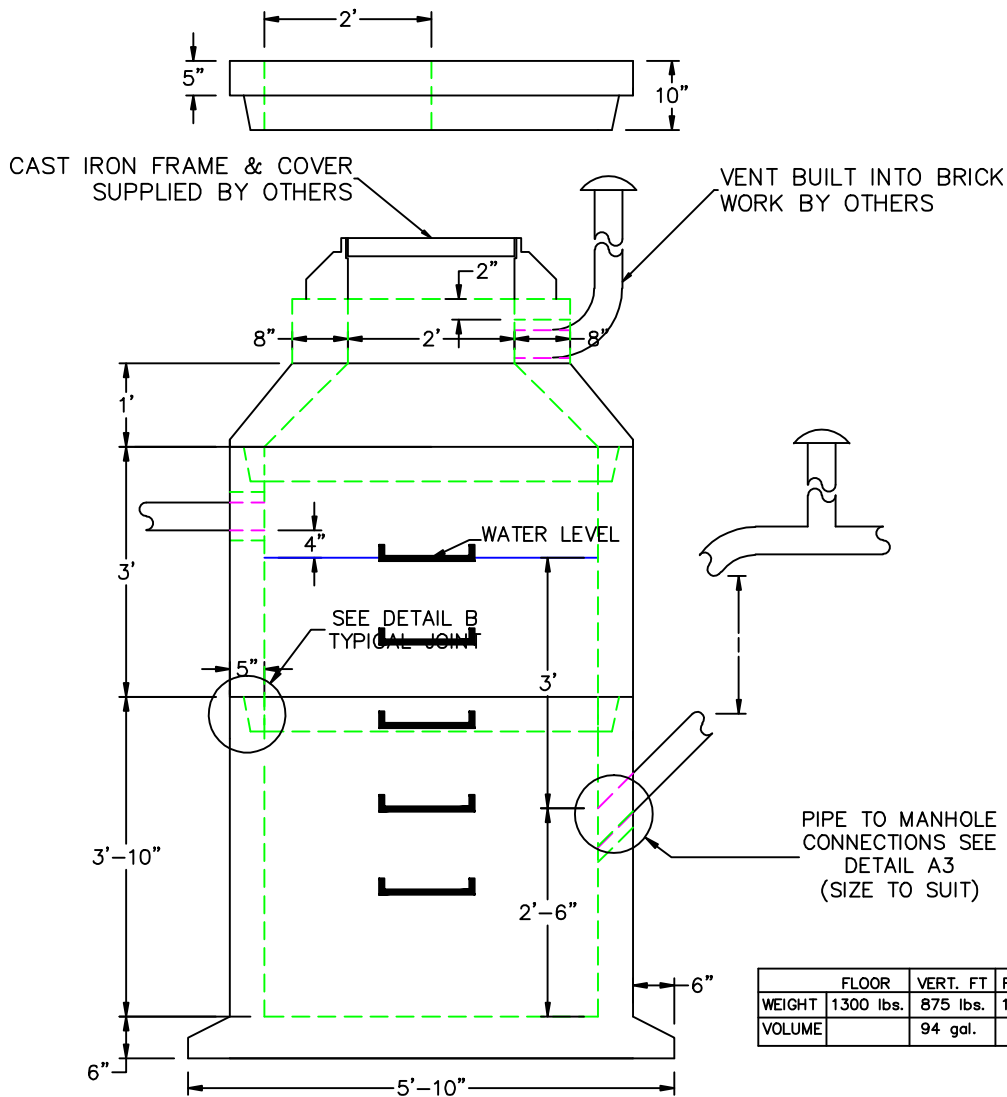


4" INLET 4' DIA GAS TRAP EXTENDED BASE



A3

NON SHRINK GROUT BY CONTRACTOR

B

BUTYL RUBBER SECTION JOINT

C

POLYPROPYLENE MANHOLE STEPS 12" O.C.

	FLOOR	VERT. FT	FLAT TOP
WEIGHT	1300 lbs.	875 lbs.	1,500 lbs.
VOLUME		94 gal.	

DESIGN NOTES:

1. MANUFACTURED TO MEET OR EXCEED: ASTM C-478 & AASHTO M 199 SPECS.
2. CONCRETE = 4,000 PSI. MINIMUM CEMENT PER ASTM C-478 (6.1)
3. REINFORCED STEEL COMFORMS TO LATEST ASTM A 185 SPECIFICATIONS.
0.12 SQ. IN / LINEAL FT. AND 0.12 SQ. IN (BOTH WAYS) BASE BOTTOM
4. STEEL REINFORCEMENT TO MEET OR EXCEED AASHTO HS-20 LOADING
5. MANHOLE STEPS MEET LATEST OSHA REGULATION 29 CFR1910.27, SECTION 16 OF ASTM SPECIFICATION C478 AND SECTION 10 OF ASTM SPECIFICATION C497
6. BUTYL RUBBER JOINT SEALANT PER ASTM C-990 & ASHTO M-198
7. EXTERIOR TO BE COATED WITH SCITUATE COMPANIES STANDARD DAMPROOFING



SCITUATE RAY PRECAST
120 CLAY PIT ROAD
MARSHFIELD, MA 02050
PHONE # 1-800-440-0009
FAX # 781-837-4320

CONTRACTOR:		JOB NAME:	
DATE:	DRAWING: SRP-GT4E	DRAWING BY: C.J. SCOTT	