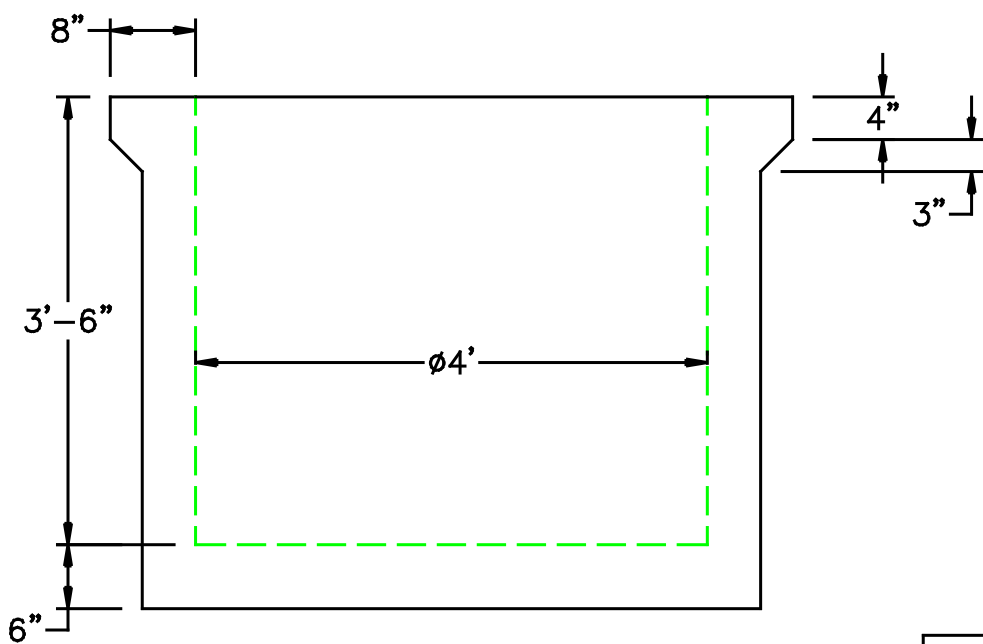
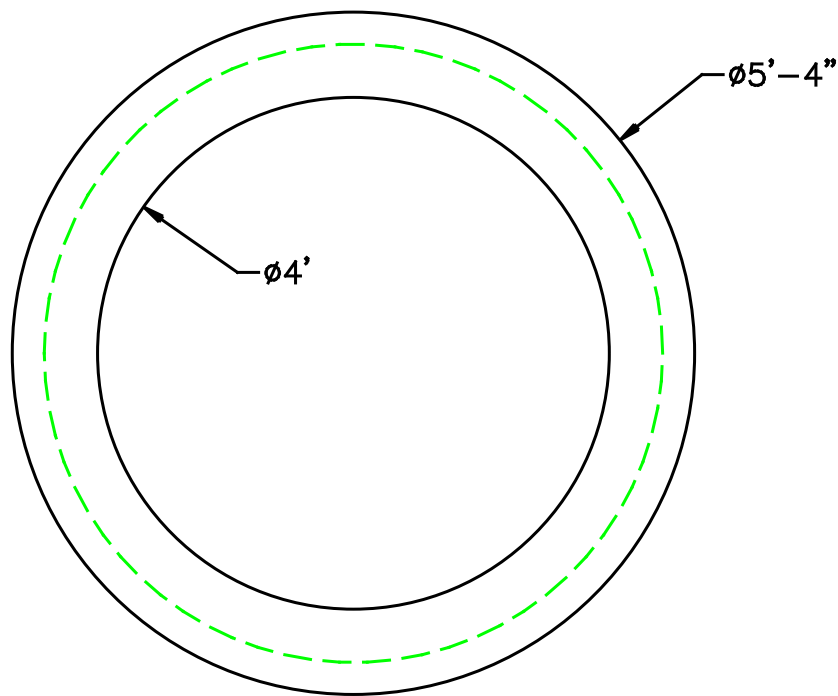


4' DIA RHODE ISLAND SUMP 4' DEEP



| | FLOOR | VERT. FT |
|--------|----------|----------|
| WEIGHT | 930 lbs. | 875 lbs. |
| VOLUME | | 94 gal. |

DESIGN NOTES:

1. MANUFACTURED TO MEET OR EXCEED: ASTM C-478 & AASHTO M 199 SPECS.
2. CONCRETE = 4,000 PSI. MINIMUM CEMENT PER ASTM C-478 (6.1)
3. REINFORCED STEEL CONFORMS TO LATEST ASTM A 185 SPECIFICATIONS. 0.12 SQ. IN / LINEAL FT. AND 0.12 SQ. IN (BOTH WAYS) BASE BOTTOM
4. STEEL REINFORCEMENT TO MEET OR EXCEED AASHTO HS-20 LOADING

| | | |
|----|------------------------------|--|
| A1 | COMPRESSION GASKET (CAST IN) | |
| A2 | FLEXIBLE SLEEVE | |
| A3 | MORTAR BY CONTRACTOR | |
| B | BUTYL RUBBER SECTION JOINT | |
| C | POLYPROPYLENE MANHOLE STEPS | |



NPCC

Precast... The Concrete Solution.



**SCITUATE
COMPANIES**

SCITUATE RAY PRECAST
120 CLAY PIT ROAD
MARSHFIELD, MA 02050
PHONE # 1-800-440-0009
FAX # 781-837-4320

CONTRACTOR:

JOB NAME:

DATE:

DRAWING: SRP-DFT4

DRAWING BY: C.J. SCOTT

WWW.SCITUATECOMPANIES.COM