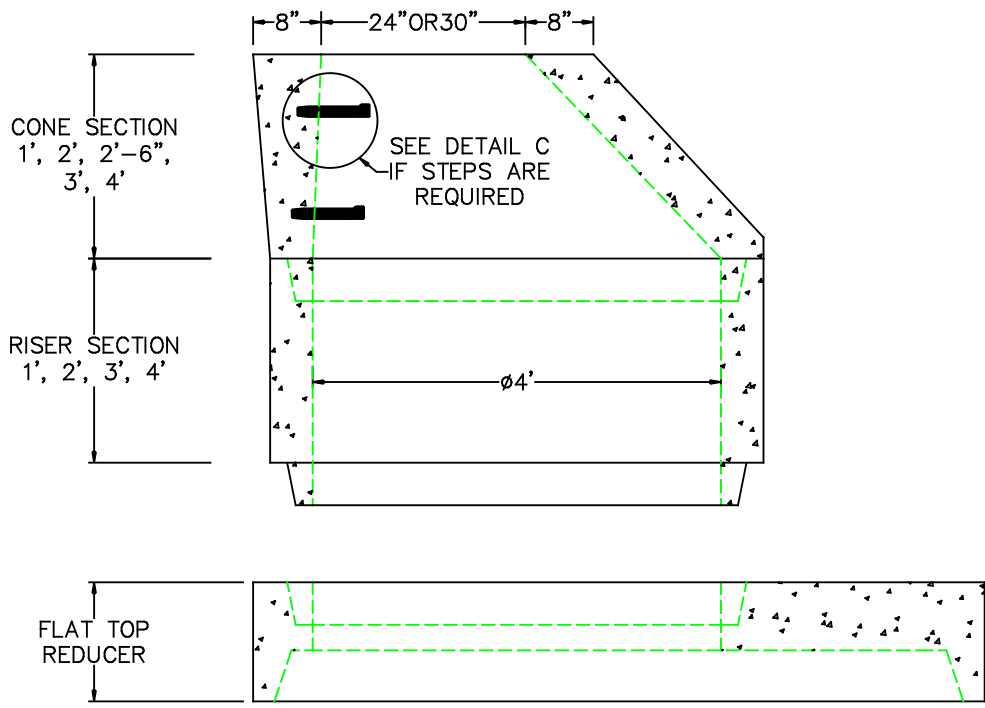


# 6' DIA TRANSITION TO 4' DIA



FLAT TOP REDUCER IS GROOVED TO ACCEPT 48" DIA RISER SECTION AND IS STEEL REINFORCED TO MEET OR EXCEED AASHTO HS-20 LOADING.

**DESIGN NOTES:**

1. MANUFACTURED TO MEET OR EXCEED: ASTM C-478 & AASHTO M 199 SPECS.
2. CONCRETE = 5,000 PSI. MINIMUM CEMENT PER ASTM C-478 (6.1)
3. REINFORCED STEEL COMFORMS TO LATEST ASTM A 185 SPECIFICATIONS. 0.18 SQ. IN / LINEAL FT. AND 0.18 SQ. IN (BOTH WAYS) BASE BOTTOM
4. STEEL REINFORCEMENT TO MEET OR EXCEED AASHTO HS-20 LOADING
5. MANHOLE STEPS MEET LATEST OSHA REGULATION 29 CFR1910.27, SECTION 16 OF ASTM SPECIFICATION C478 AND SECTION 10 OF ASTM SPECIFICATION C497
6. BUTYL RUBBER JOINT SEALANT PER ASTM C-990 & ASHTO M-198
7. ONE POUR MONOLITHIC BASE

A1	COMPRESSION GASKET (CAST IN)	
A2	FLEXIBLE SLEEVE	
A3	MORTAR BY CONTRACTOR	
B	BUTYL RUBBER SECTION JOINT	
C	POLYPROPYLENE MANHOLE STEPS	



		SCITUATE RAY PRECAST 120 CLAY PIT ROAD MARSHFIELD, MA 02050 PHONE # 1-800-440-0009 FAX # 781-837-4320
CONTRACTOR:		JOB NAME:
DATE:	DRAWING: SRP-TRANS64	DRAWING BY: C.J. SCOTT