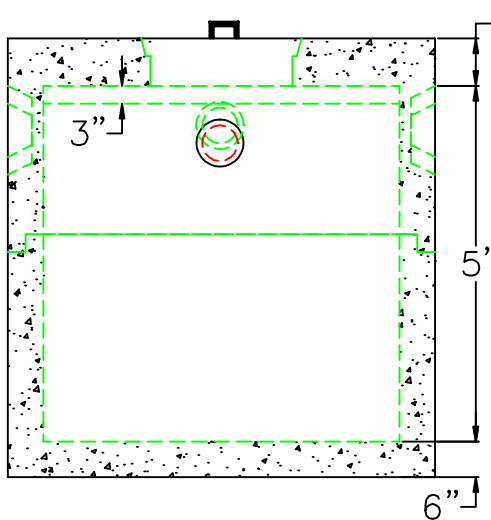
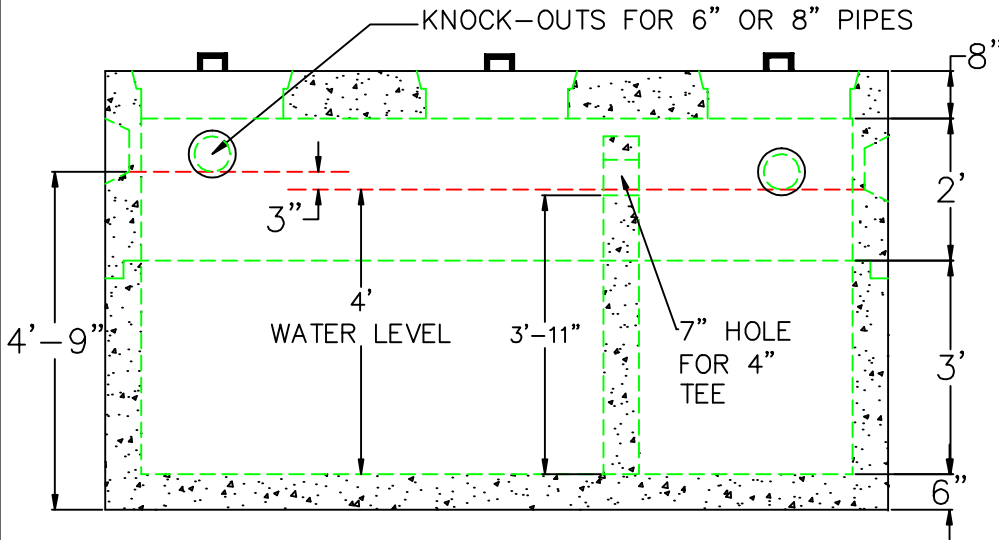
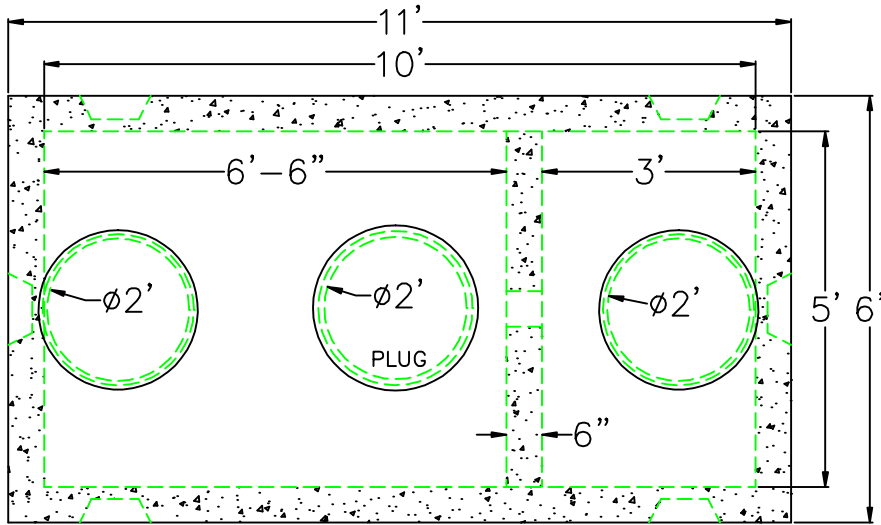


1,500 GALLON 2-COMPARTMENT TANK



DESIGN NOTES:

1. CONCRETE 5,000 PSI. @ 28 DAYS
2. HS-20-44 LOADING WITH 12" TO 60" OF COVER
3. REINFORCING ASTM A-615 GRADE 60
4. CONST. JOINT TO HAVE MIN. 1" BUTYL SEALANT

	FLOOR	VERT. FT	FLAT TOP
WEIGHT	4,850 lbs.	2,470 lbs.	6,400 lbs.
VOLUME		375gal.	



SCITUATE RAY PRECAST
 120 CLAY PIT ROAD
 MARSHFIELD, MA 02050
 PHONE # 1-800-440-0009
 FAX # 781-837-4320

CONTRACTOR:		JOB NAME:	
DATE: 8/8/2017	APPROVED BY:	DRAWING BY: JOHN KASPER	