



120 CLAY PIT ROAD
 MARSHFIELD, MA 02050
 PHONE # 1-800-440-0009
 FAX # 781-837-4320

DESIGN NOTES:

1. CONCRETE 5,000 PSI @ 28 DAYS
2. REINFORCING ASTM A-615 GRADE
 60 #5 REBAR 12" O.C.B.W. OR EQUAL
3. STRUCTURE DESIGNED FOR H-20 LOADING
 WITH 18" TO 5" OF COVER
4. SEE CONDITIONS SHEET FOR PROPER SITE PREPARATION

CONTRACTOR:

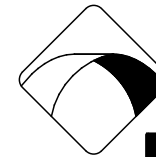
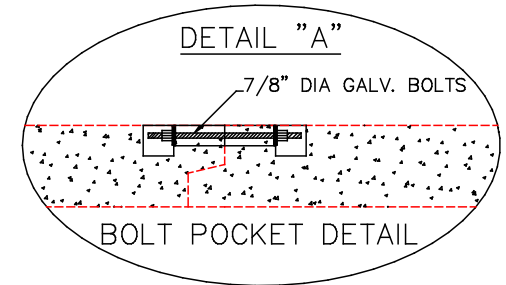
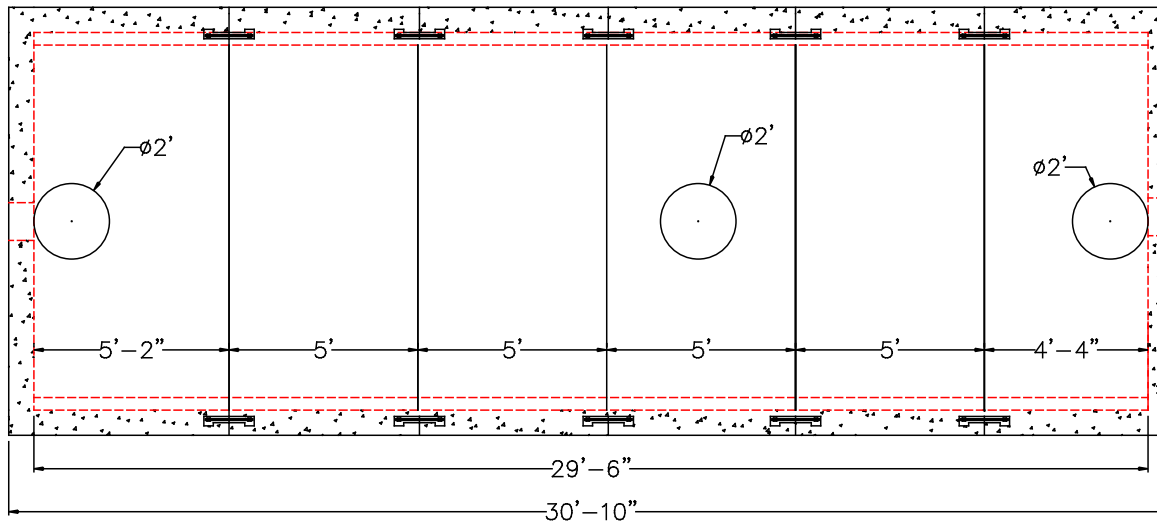
JOB NAME:

DATE:

APPROVED BY:

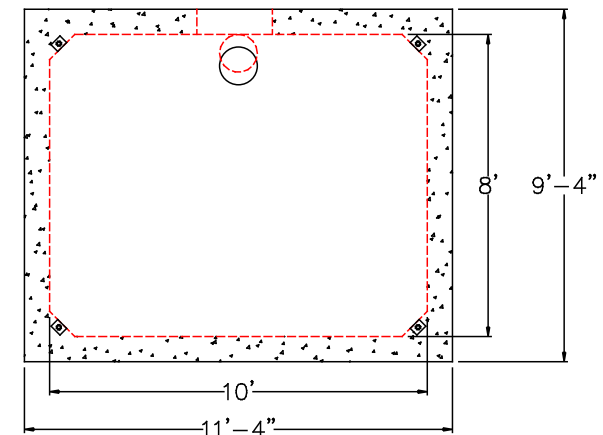
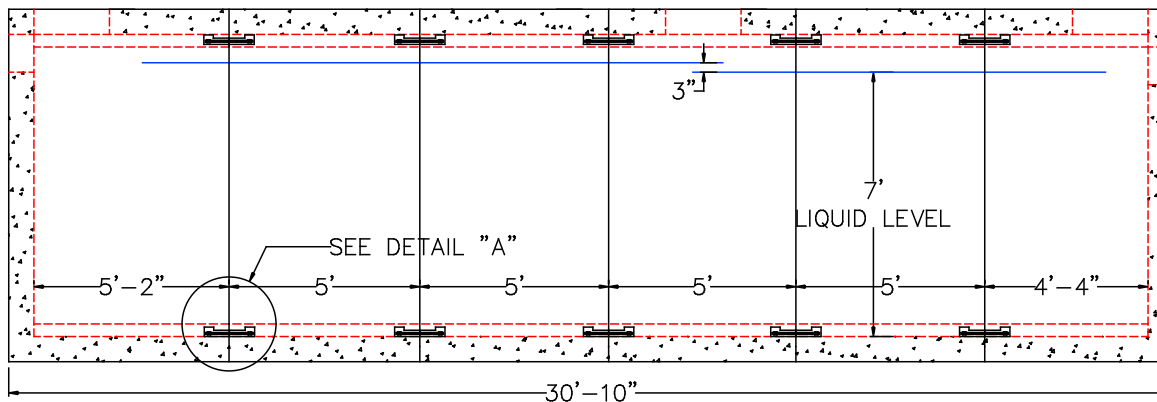
DRAWING BY: C. J. SCOTT

15,000 GALLON SINGLE COMPARTMENT H-20 TANK



NPCC

Precast ... The Concrete Solution.



APPROVED FOR PRODUCTION BY _____

DATE _____