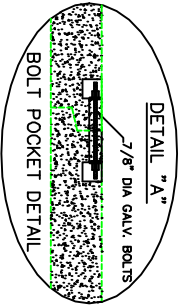
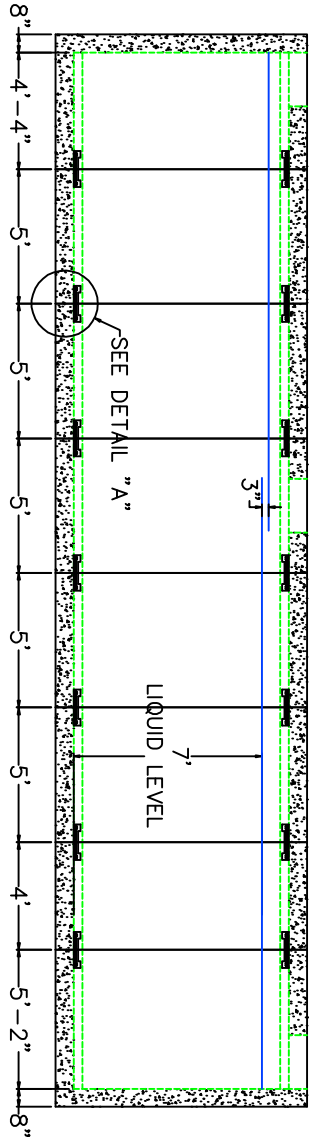
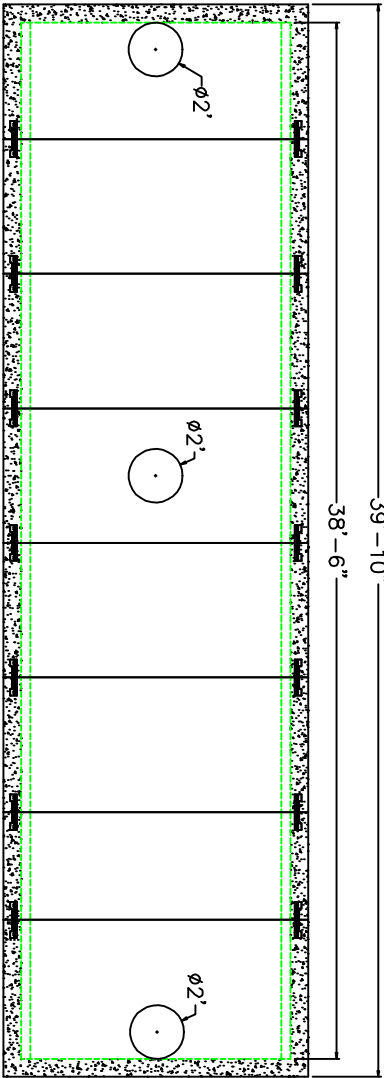




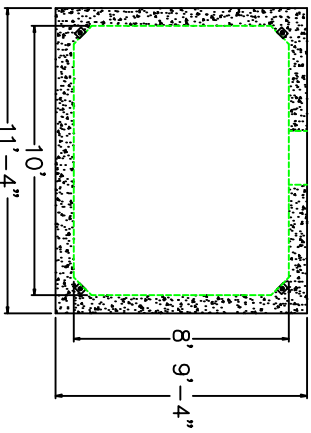
Precast... The Concrete Solution

- DESIGN NOTES:
1. CONCRETE 5,000 PSI @ 28 DAYS
 2. REINFORCING ASTM A-615 GRADE 60 #5 REBAR 12" O.C.B.W. OR EQUAL
 3. STRUCTURE DESIGNED FOR H-20 LOADING

39'-10"



	END WALL	LINEAR FT
WEIGHT	10,300 lbs.	3,800 lbs.
VOLUME		525 gal.



SCITUATE COMPANIES

120 CLAY PIT ROAD
MARSHFIELD, MA 02050
PHONE # 1-800-440-0009
FAX # 781-837-4320

CONTRACTOR:

JOB NAME:

DATE:10/17/2017 APPROVED BY:

DRAWING BY: JOHN KASPER

20,000 GALLON HOLDING TANK