



SCITUATE RAY PRECAST  
 120 CLAY PIT ROAD  
 MARSHFIELD, MA 02050  
 PHONE # 1-800-440-0009  
 FAX # 781-837-4320

CONTRACTOR:

JOB NAME:

DATE: DRAWING: ST-25K-20

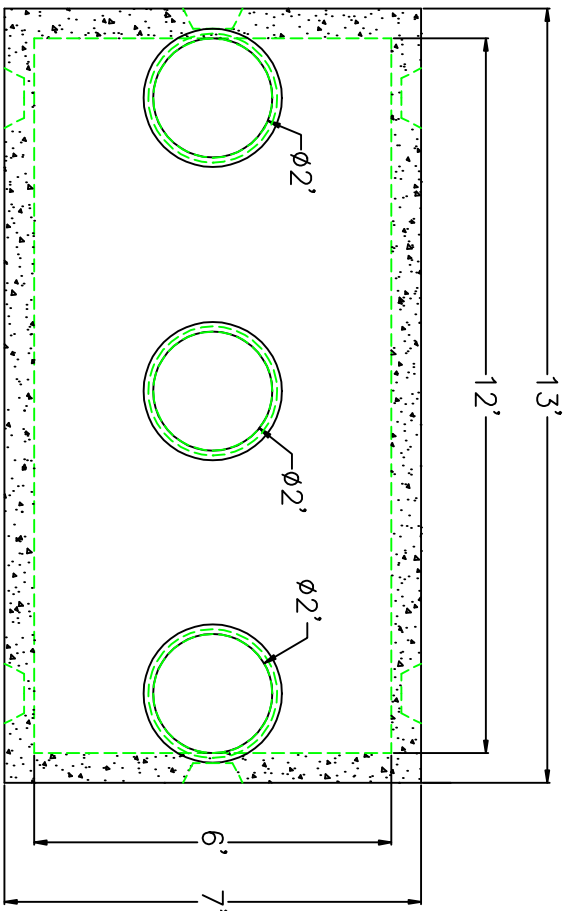
DRAWING BY: JOHN KASPER

2,500 GALLON TANK WITH EXTENDED BASE

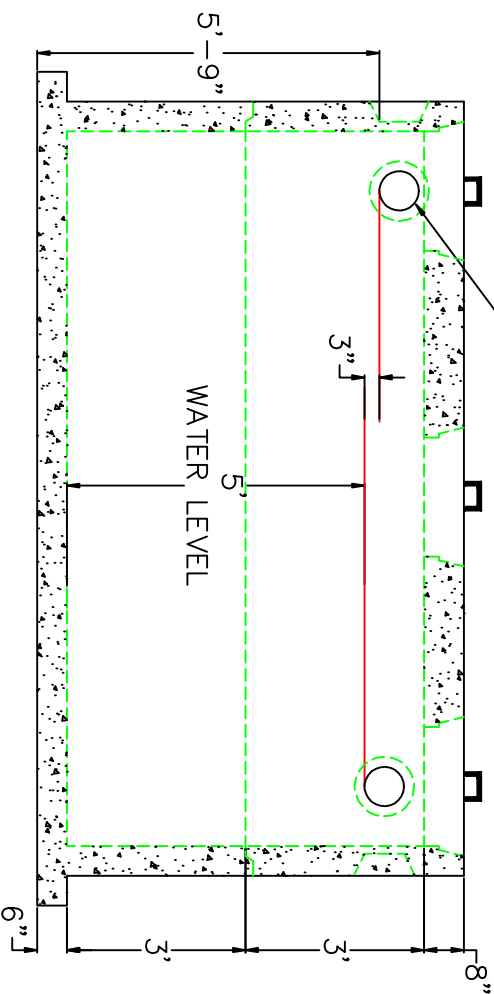
FLOOR	VERT. FT	FLAT TOP
WEIGHT	6,700 lbs.	2,800 lbs.   8,700 lbs.
VOLUME	539 gal.	

DESIGN NOTES:

1. CONCRETE 5,000 PSI. @ 28 DAYS
2. HS-20-44 LOADING WITH 12" - 60" OF COVER
3. REINFORCING ASTM A-615 GRADE 60
4. CONST. JOINT TO HAVE MIN. 1" BUTYL SEALANT
5. EXTERIOR BITUMINOUS COATING AS REQUIRED



KNOCK OUTS FOR 6" OR 8" INLET/OUTLET



**MPCP**

Precast... The Concrete Solution.

