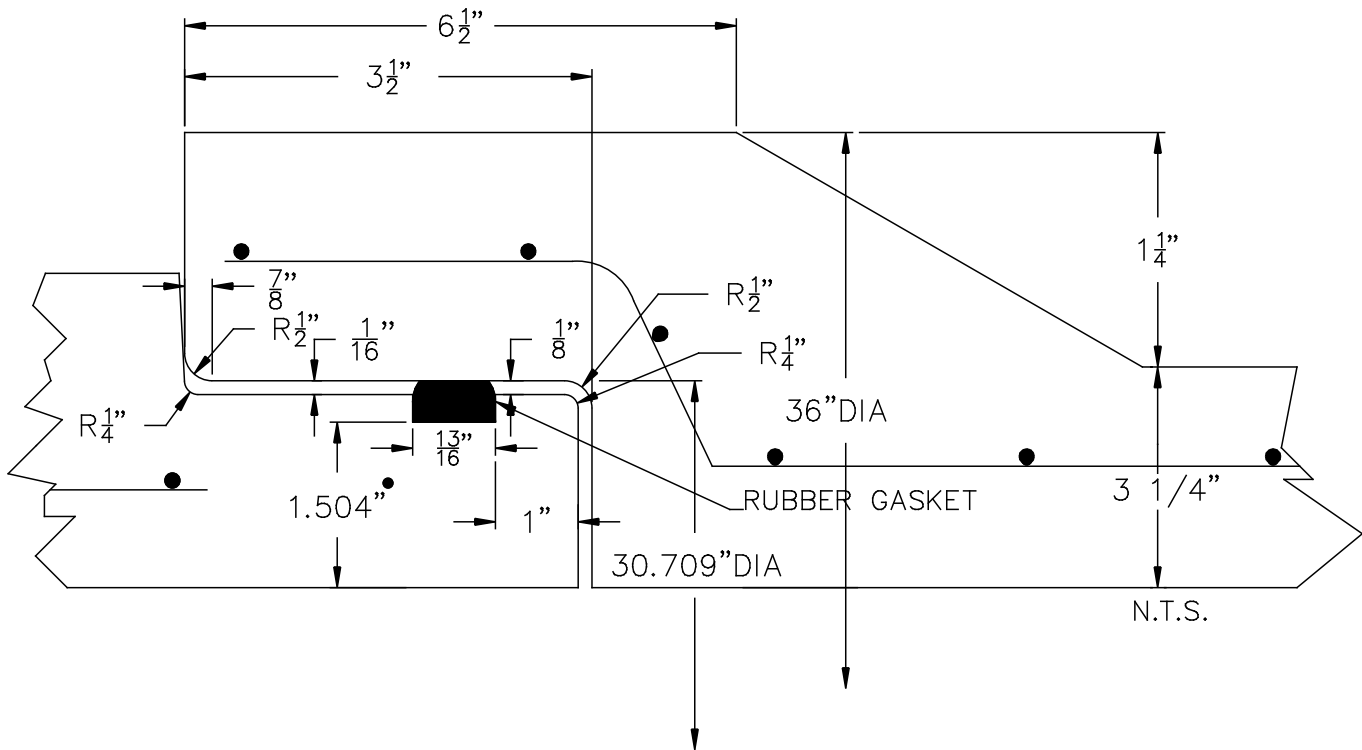


27" RCP O-RING JOINT REINFORCED

DESIGN NOTES:

1. MFG. IN ACCORDANCE WITH ASTM SPEC. C76 & AASHO SPEC. M170, WALL B.
2. CEMENT TYPE II
3. CONCRETE STRENGTH CLASS III & IV 4,000psi CLASS V 6,000psi
4. CIRCUM. REINFORCEMENT:
 CLASS III 0.16 SQ. IN. PER FT.
 CLASS IV 0.31 SQ. IN. PER FT.
 CLASS V 0.38 SQ. IN. PER FT. INNER CAGE
 0.28 SQ. IN. PER FT. OUTER CAGE
5. LAYING LENGTH 8'-0"
6. RUBBER GASKET ASTM SPEC. C443 & C361



NPCC

Precast ... The Concrete Solution.



**SCITUATE
COMPANIES**

SCITUATE CONCRETE PIPE
 P.O. BOX 870 * 1 BUCKEYE LANE
 SCITUATE, MA 02066
 PHONE # 1-800-322-4488
 FAX # 781-545-6021

CONTRACTOR:

JOB NAME:

DATE:

APPROVED BY:

DRAWING BY: C.J. SCOTT

WWW.SCITUATECOMPANIES.COM