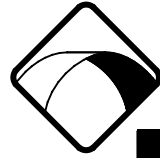
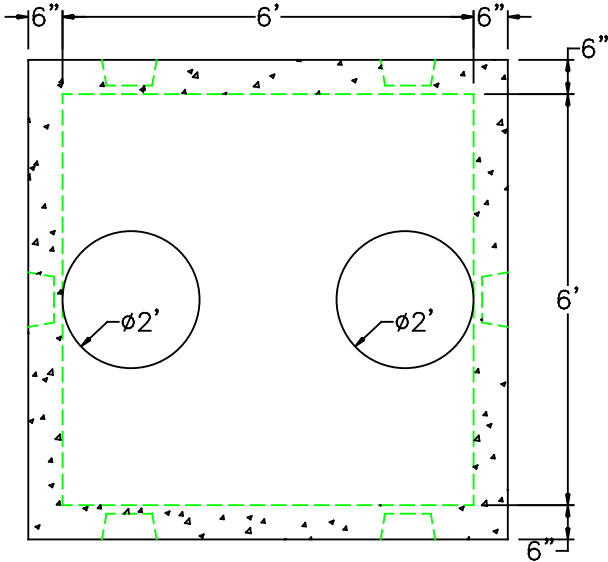


6' X 6' 1,000 GALLON GREASE TRAP



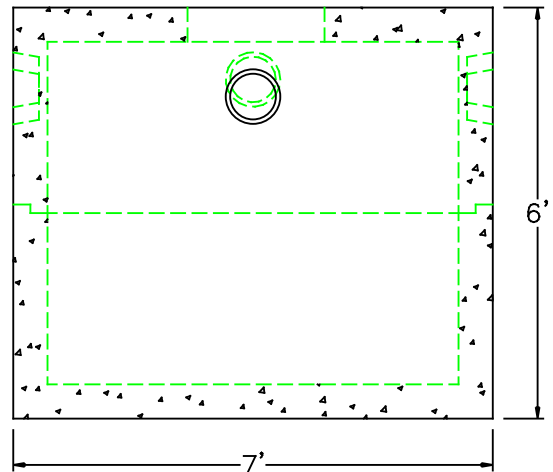
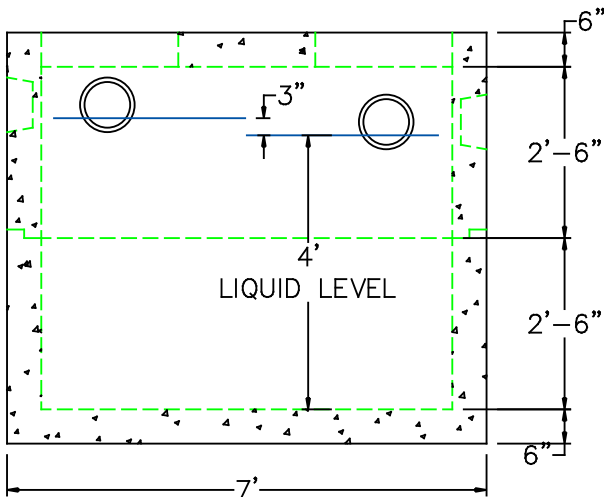
NPCA

Precast ... The Concrete Solution.

DESIGN NOTES:

1. CONCRETE 5,000 PSI @ 28 DAYS
2. REINFORCEMENT ASTM A-615 GRADE 60, 1" MIN. COVER
3. DESIGNED FOR H-20 LOADING
4. CONSTRUCTION JOINT SEALED WITH 1" BUTYL RUBBER OR EQUAL

	FLOOR	VERT. FT	COVER
WEIGHT	3,600 lbs.	1,900 lbs.	3,600 lbs.
VOLUME		270 gal.	



SCITUATE RAY PRECAST
 120 CLAY PIT ROAD
 MARSHFIELD, MA 02050
 PHONE # 1-800-440-0009
 FAX # 781-837-4320

CONTRACTOR:		JOB NAME:	
DATE:	DRAWING: SRP-GT1K66	DRAWING BY:	C. J. SCOTT