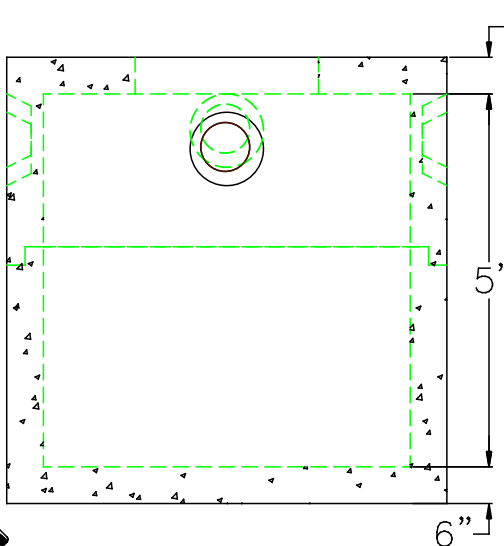
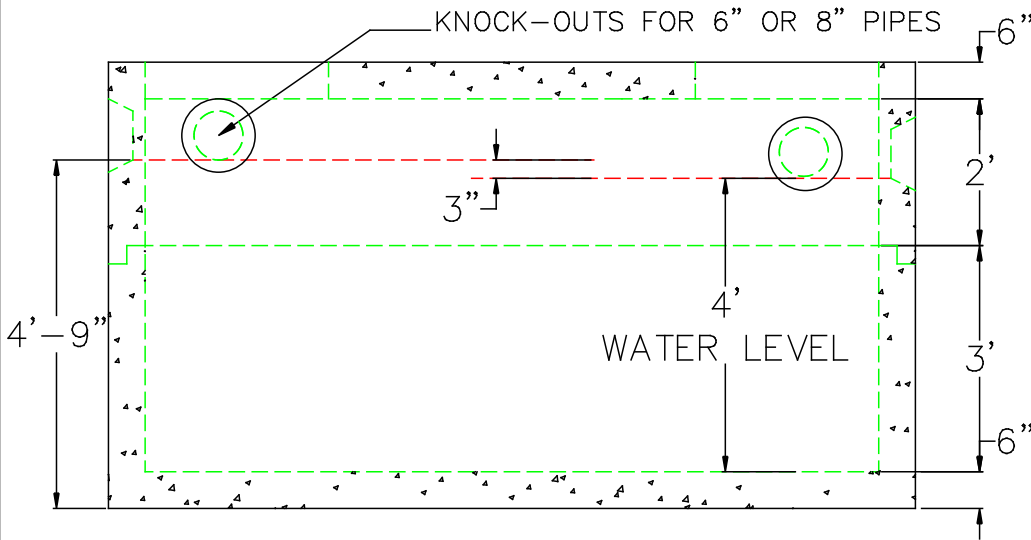
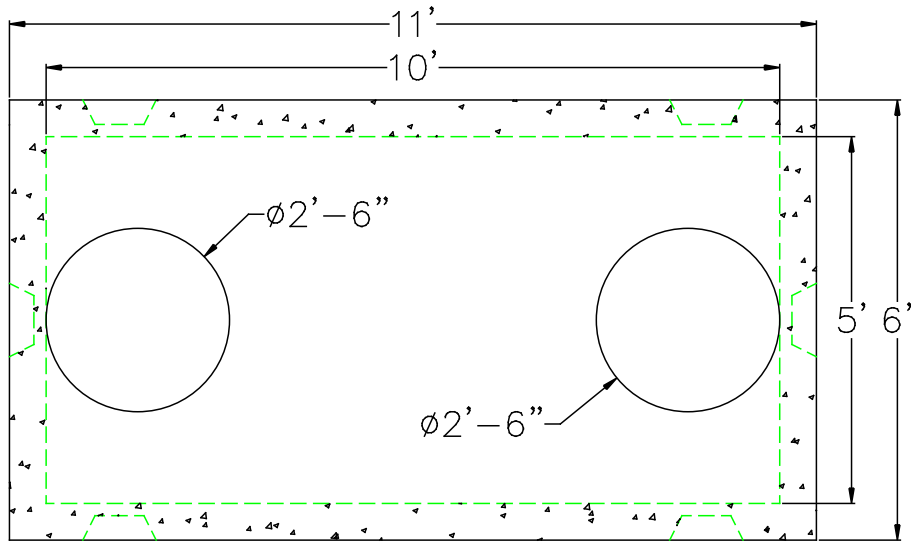


1,500 GALLON GREASE TRAP



DESIGN NOTES:

1. CONCRETE 5,000 PSI. @ 28 DAYS
2. HS-20-44 LOADING WITH 12" TO 60" OF COVER
3. REINFORCING ASTM A-615 GRADE 60
4. CONST. JOINT TO HAVE MIN. 1" BUTYL SEALANT
5. EXTERIOR BITUMINOUS COATING AS REQUIRED

	FLOOR	VERT. FT	COVER
WEIGHT	4,800 lbs.	2,300 lbs.	4,800 lbs.
VOLUME		375 gal.	



SCITUATE RAY PRECAST
 120 CLAY PIT ROAD
 MARSHFIELD, MA 02050
 PHONE # 1-800-440-0009
 FAX # 781-837-4320

CONTRACTOR:

JOB NAME:

DATE:

DRAWING: SRP-GT1.5K-20

DRAWING BY: C. J. SCOTT

