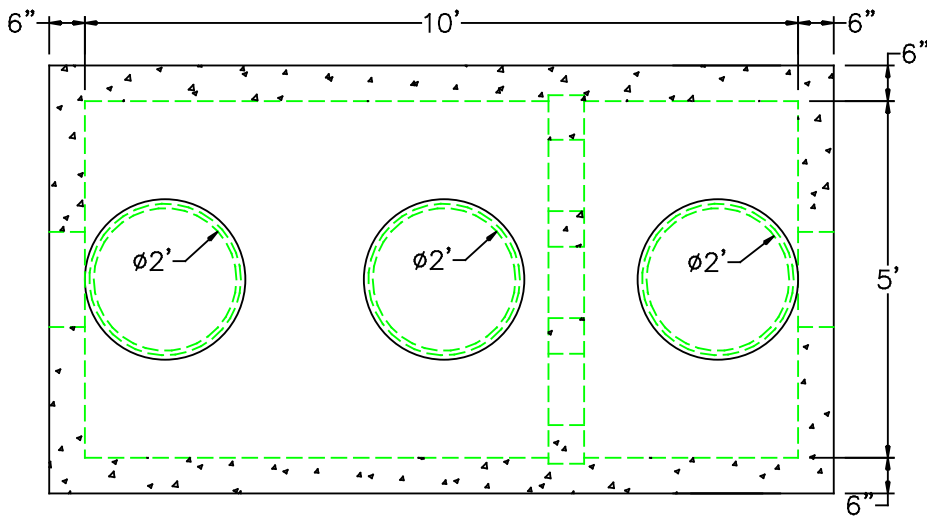
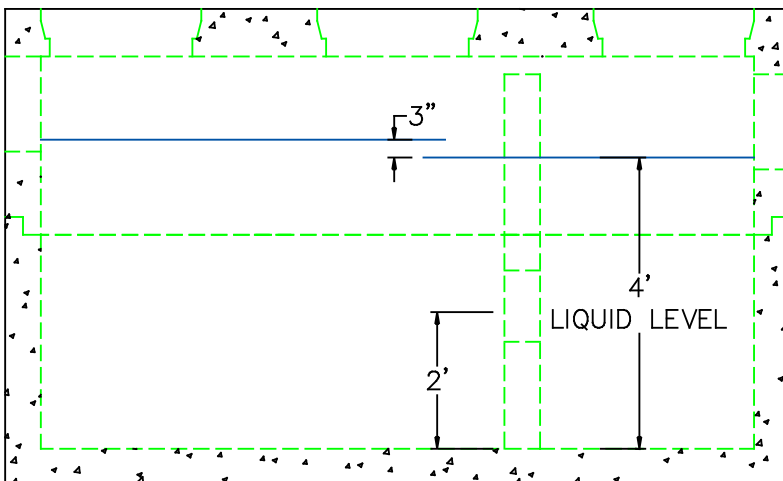


# 1,500 GALLON PARTICAL SEPARATOR

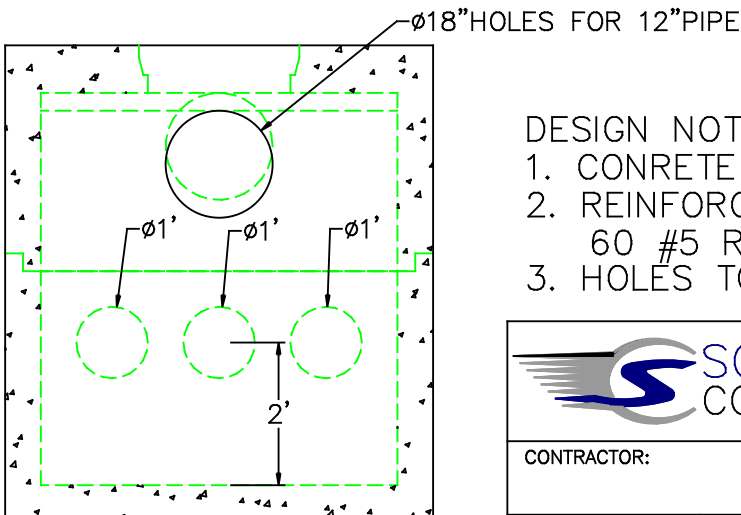


	FLOOR	VERT. FT	COVER
WEIGHT	4,800 lbs.	2,300 lbs.	4,800 lbs.
VOLUME		375 gal.	



**NPCA**

Precast ... The Concrete Solution.



**DESIGN NOTES:**

1. CONCRETE 5,000 PSI @ 28 DAYS
2. REINFORCING ASTM A-615 GRADE  
60 #5 REBAR 12" O.C.B.W. OR EQUAL
3. HOLES TO BE CAST AS SHOWN



SCITUATE RAY PRECAST  
120 CLAY PIT ROAD  
MARSHFIELD, MA 02050  
PHONE # 1-800-440-0009  
FAX # 781-837-4320

CONTRACTOR:

JOB NAME:

DATE:

DRAWING: SRP-PS1.5K-20

DRAWING BY: C. J. SCOTT