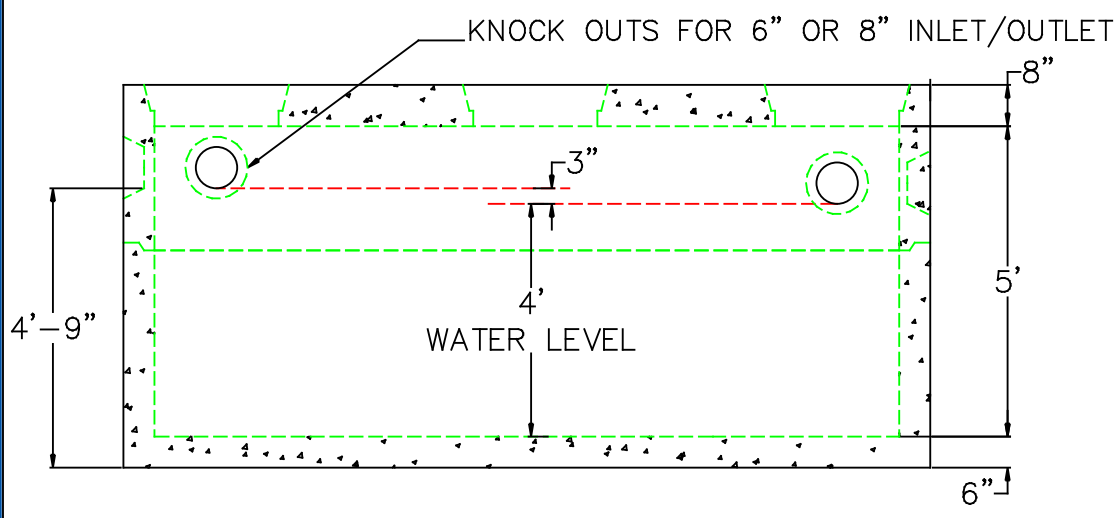
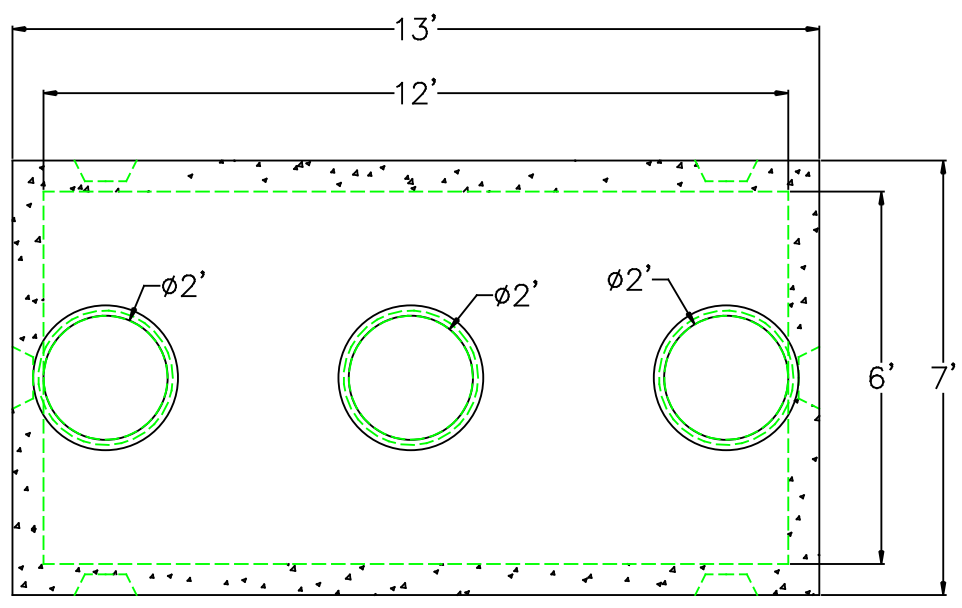
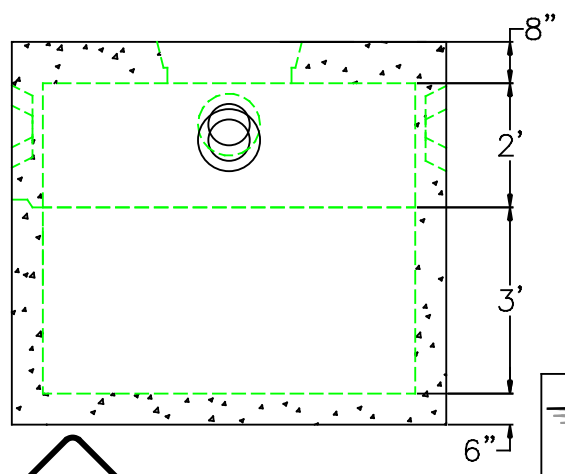


# 2,000 GALLON GREASE TRAP



	FLOOR	VERT. FT	FLAT TOP
WEIGHT	6,700 lbs.	2,800 lbs.	8,700 lbs.
VOLUME		539 gal.	

- DESIGN NOTES:**
1. CONCRETE 5,000 PSI. @ 28 DAYS
  2. HS-20-44 LOADING WITH 12" - 60" OF COVER
  3. REINFORCING ASTM A-615 GRADE 60
  4. CONST. JOINT TO HAVE MIN. 1" BUTYL SEALANT
  5. EXTERIOR BITUMINOUS COATING AS REQUIRED



**SCITUATE COMPANIES**

SCITUATE RAY PRECAST  
120 CLAY PIT ROAD  
MARSHFIELD, MA 02050  
PHONE # 1-800-440-0009  
FAX # 781-837-4320

CONTRACTOR:		JOB NAME:	
DATE:	DRAWING: SRP-GT2K	DRAWING BY:	
2,000 GALLON GREASE TRAP			