

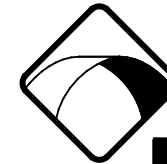


SCITUATE RAY PRECAST  
 120 CLAY PIT ROAD  
 MARSHFIELD, MA 02050  
 PHONE # 1-800-440-0009  
 FAX # 781-837-4320

CONTRACTOR: \_\_\_\_\_ JOB NAME: \_\_\_\_\_

DATE: \_\_\_\_\_ DRAWING: SRP-GT4.5K DRAWING BY: C. J. SCOTT

4,500 GALLON GREASE TRAP

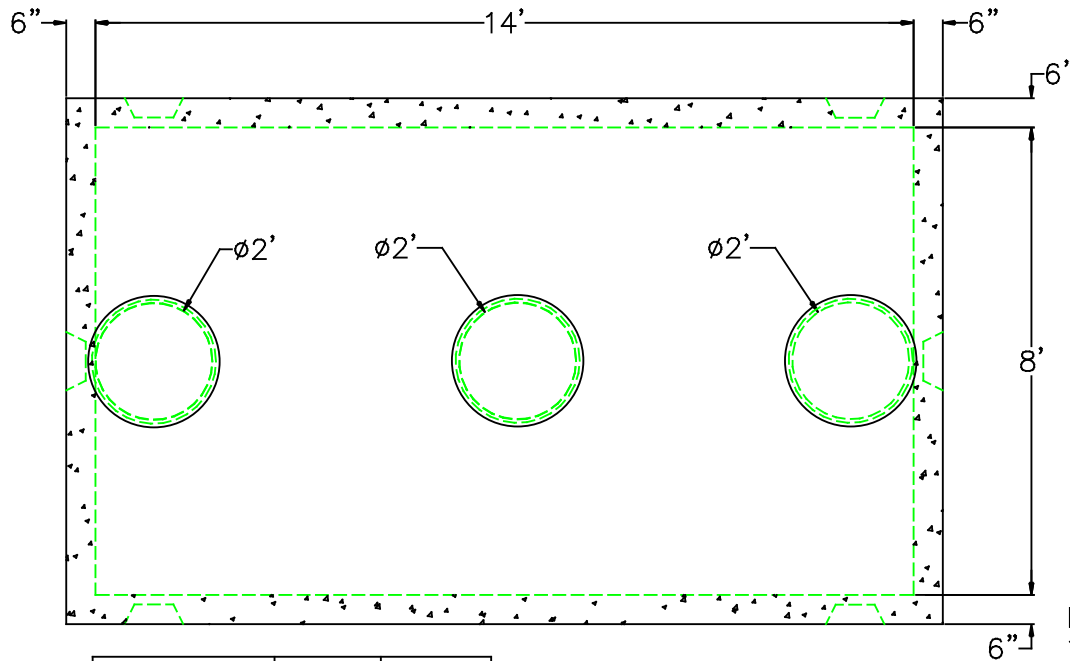


**NPCA**

Precast ... The Concrete Solution.

DESIGN NOTES:

1. CONCRETE 5,000 PSI. @ 28 DAYS
2. HS-20-44 LOADING WITH 12" - 60" OF COVER
3. REINFORCING ASTM A-615 GRADE 60
4. CONST. JOINT TO HAVE MIN. 1" BUTYL SEALANT
5. EXTERIOR BITUMINOUS COATING AS REQUIRED



	FLOOR	VERT. FT	FLAT TOP
WEIGHT	10,000 lbs.	3,400 lbs.	13,000 lbs.
VOLUME		838 gal.	

KNOCK OUTS FOR 6" OR 8" INLET/OUTLET

