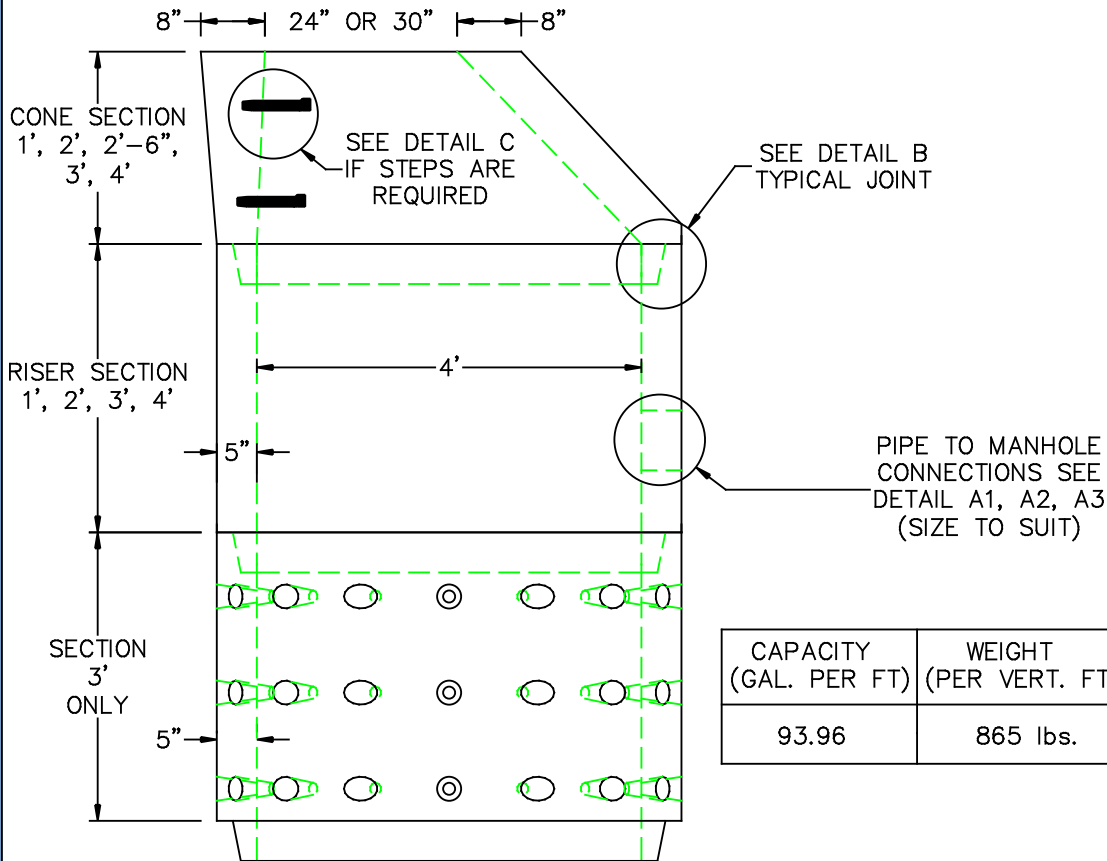
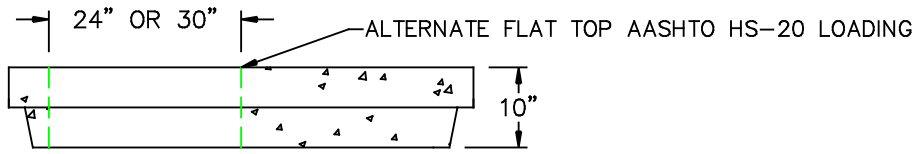
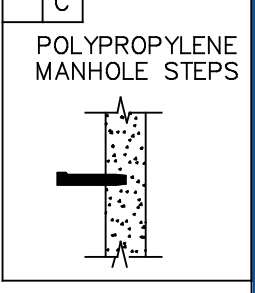
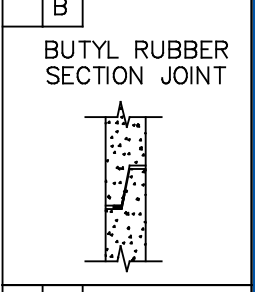
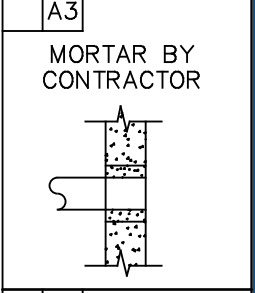
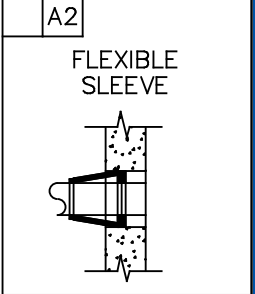
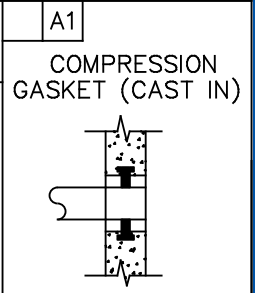


# 4' DIA LEACHING SECTION



CAPACITY (GAL. PER FT)	WEIGHT (PER VERT. FT)
93.96	865 lbs.



- DESIGN NOTES:
1. MANUFACTURED TO MEET OR EXCEED: ASTM C-478 & AASHTO M 199 SPECS.
  2. CONCRETE = 4,000 PSI. MINIMUM CEMENT PER ASTM C-478 (6.1)
  3. REINFORCED STEEL CONFORMS TO LATEST ASTM A 185 SPECIFICATIONS. 0.12 SQ. IN / LINEAL FT. AND 0.12 SQ. IN (BOTH WAYS) BASE BOTTOM
  4. STEEL REINFORCEMENT TO MEET OR EXCEED AASHTO HS-20 LOADING
  5. MANHOLE STEPS-POLYPROPYLENE COATED GRADE-60 REINFORCING BAR, PER ASTM C-478 & O.S.H.A. (STD 1-1.9)
  6. BUTYL RUBBER JOINT SEALANT PER ASTM C-990 & ASHTO M-198
  7. WATER PROOFING PER CONTRACT SPECS. AS REQUIRED



SCITUATE RAY PRECAST  
 120 CLAY PIT ROAD  
 MARSHFIELD, MA 02050  
 PHONE # 1-800-440-0009  
 FAX # 781-837-4320

CONTRACTOR:		JOB NAME:	
DATE:	DRAWING: SRP-DW4S	DRAWING BY: C.J. SCOTT	