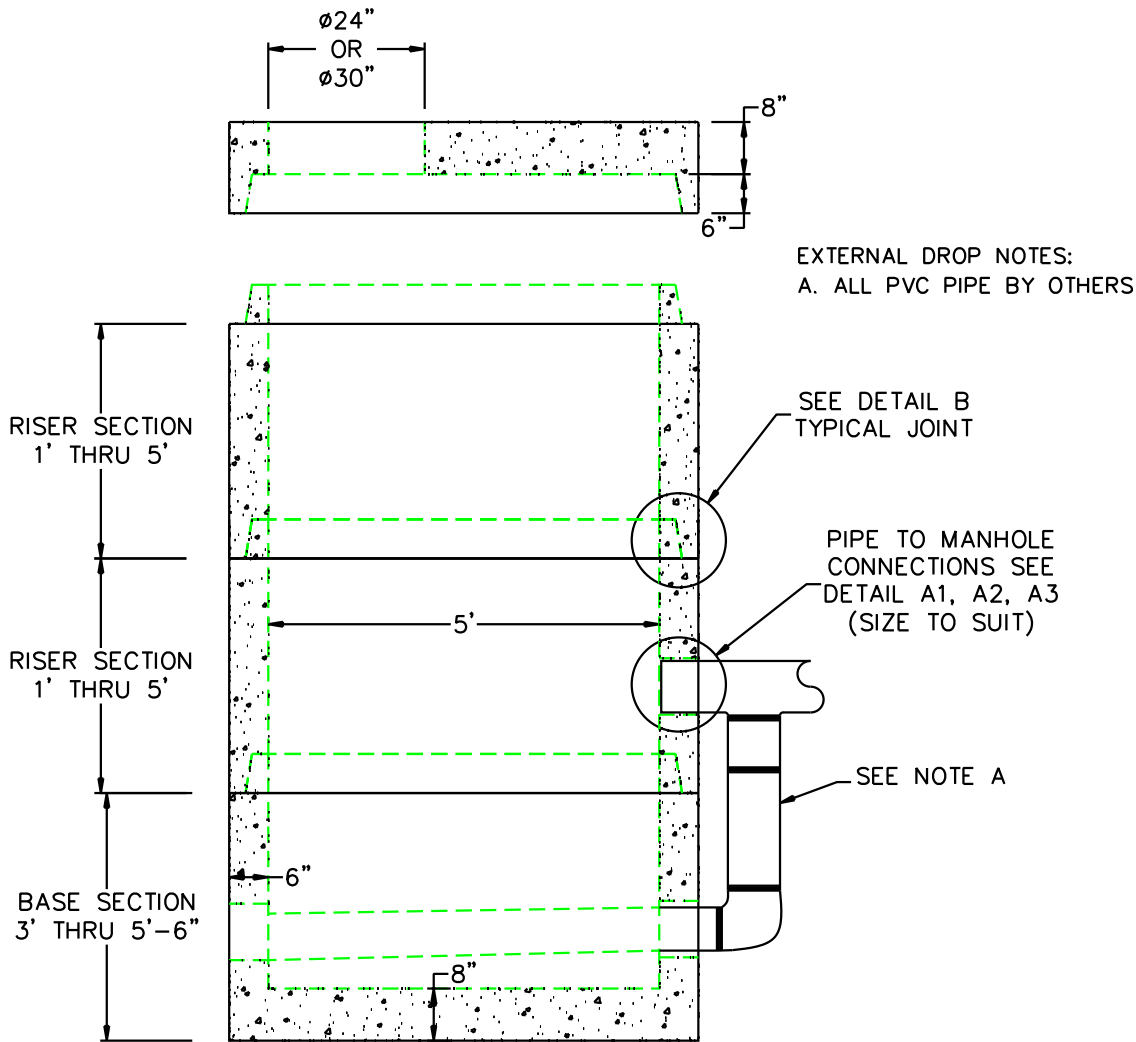


5' DIA OUTSIDE DROP SEWER MANHOLE



EXTERNAL DROP NOTES:
A. ALL PVC PIPE BY OTHERS

SEE DETAIL B
TYPICAL JOINT

PIPE TO MANHOLE
CONNECTIONS SEE
DETAIL A1, A2, A3
(SIZE TO SUIT)

SEE NOTE A

	FLOOR	VERT. FT	FLAT TOP
WEIGHT	1,530 lbs.	1,300 lbs.	2,840 lbs.
VOLUME		146.8 gal.	

DESIGN NOTES:

1. MANUFACTURED TO MEET OR EXCEED: ASTM C-478 & AASHTO M 199 SPECS.
2. CONCRETE = 4,000 PSI. MINIMUM CEMENT PER ASTM C-478 (6.1)
3. REINFORCED STEEL COMFORMS TO LATEST ASTM A 185 SPECIFICATIONS. 0.15 SQ. IN / LINEAL FT. AND 0.15 SQ. IN (BOTH WAYS) BASE BOTTOM
4. STEEL REINFORCEMENT TO MEET OR EXCEED AASHTO HS-20 LOADING
5. MANHOLE STEPS MEET LATEST OSHA REGULATION 29 CFR1910.27, SECTION 16 OF ASTM SPECIFICATION C478 AND SECTION 10 OF ASTM SPECIFICATION C497
6. BUTYL RUBBER JOINT SEALANT PER ASTM C-990 & ASHTO M-198
7. ONE POUR MONOLITHIC BASE

A1	COMPRESSION GASKET (CAST IN)	
A2	FLEXIBLE SLEEVE	
A3	MORTAR BY CONTRACTOR	
B	BUTYL RUBBER SECTION JOINT	
C	POLYPROPYLENE MANHOLE STEPS	



NPCA

Precast ... The Concrete Solution.



**SCITUATE
COMPANIES**

SCITUATE RAY PRECAST
120 CLAY PIT ROAD
MARSHFIELD, MA 02050
PHONE # 1-800-440-0009
FAX # 781-837-4320

CONTRACTOR:

JOB NAME:

DATE:

DRAWING: SRP-SMH5-OD

DRAWING BY: C.J. SCOTT