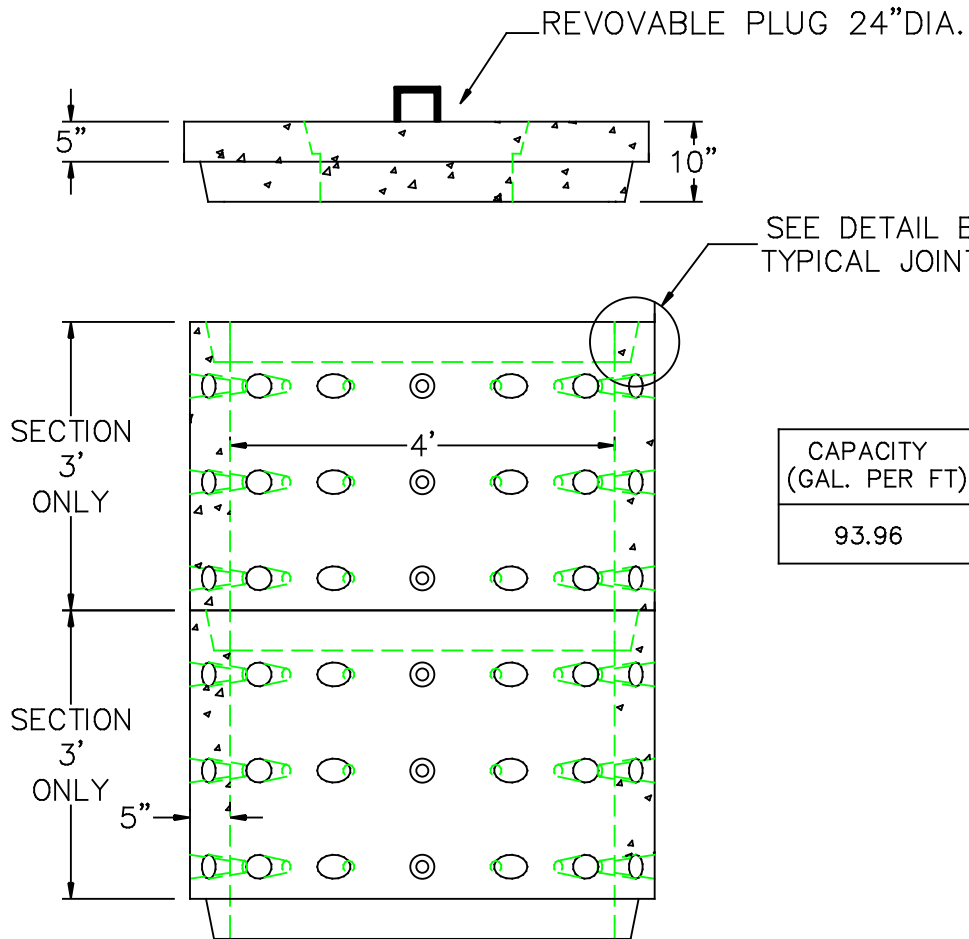
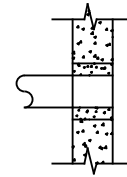


# 4' DIA X 6' TALL DRYWELL



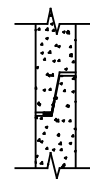
A3

MORTAR BY CONTRACTOR



B

BUTYL RUBBER SECTION JOINT



SEE DETAIL B  
TYPICAL JOINT

CAPACITY (GAL. PER FT)	WEIGHT (PER VERT. FT)
93.96	865 lbs.

**DESIGN NOTES:**

1. MANUFACTURED TO MEET OR EXCEED: ASTM C-478 & AASHTO M 199 SPECS.
2. CONCRETE = 4,000 PSI. MINIMUM CEMENT PER ASTM C-478 (6.1)
3. REINFORCED STEEL COMFORMS TO LATEST ASTM A 185 SPECIFICATIONS.  
0.12 SQ. IN / LINEAL FT. AND 0.12 SQ. IN (BOTH WAYS) BASE BOTTOM
4. STEEL REINFORCEMENT TO MEET OR EXCEED AASHTO HS-20 LOADING
5. BUTYL RUBBER JOINT SEALANT PER ASTM C-990 & ASHTO M-198



**NPCA**

Precast... The Concrete Solution.



**SCITUATE  
COMPANIES**

SCITUATE RAY PRECAST  
120 CLAY PIT ROAD  
MARSHFIELD, MA 02050  
PHONE # 1-800-440-0009  
FAX # 781-837-4320

CONTRACTOR:

JOB NAME:

DATE:

DRAWING: SRP-DW46S-FT

DRAWING BY: C.J. SCOTT

[WWW.SCITUATECOMPANIES.COM](http://WWW.SCITUATECOMPANIES.COM)