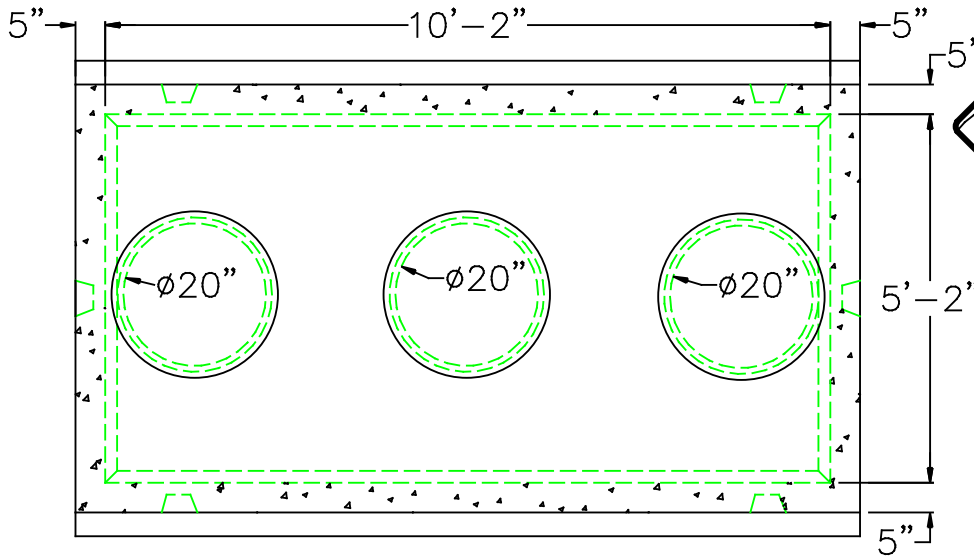
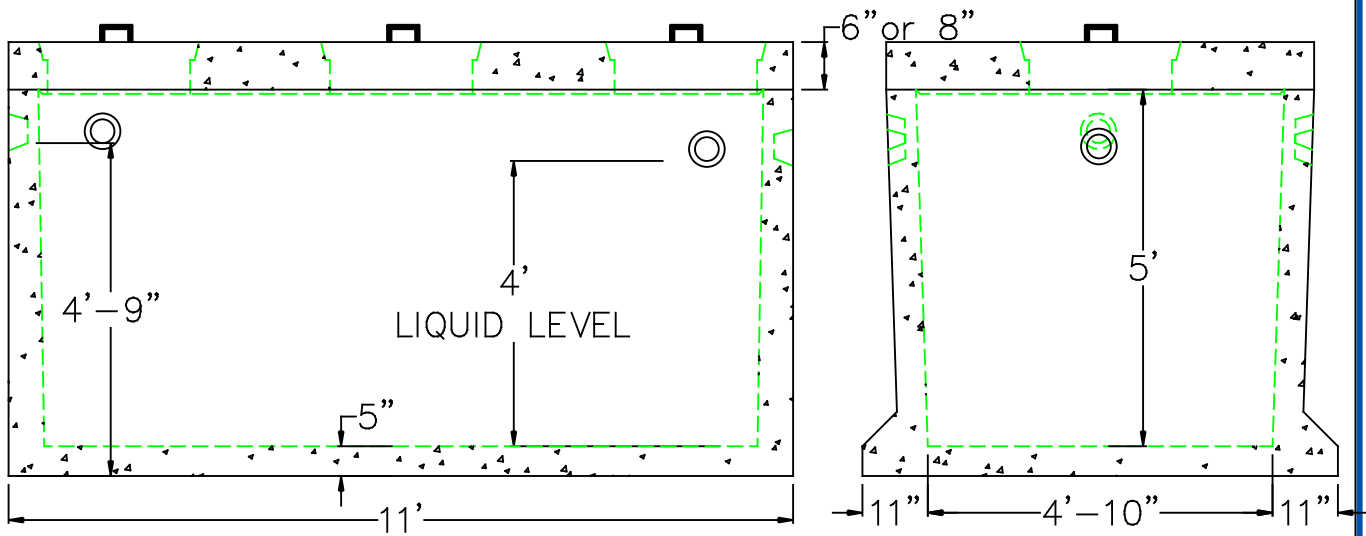


1,500 GALLON H-20 EXTENDED BASE MONOLITHIC



NPCA

Precast ... The Concrete Solution.



DESIGN NOTES:

1. CONCRETE 5,000 PSI. @ 28 DAYS
2. HS-20-44 LOADING WITH 12" TO 60" OF COVER
3. REINFORCING ASTM A-615 GRADE 60
4. CONST. JOINT TO HAVE MIN. 1" BUTYL SEALANT

	FLOOR	VERT. FT	FLAT TOP
WEIGHT	4,400 lbs.	2,100 lbs.	4,900 lbs.
VOLUME		393 gal.	



SCITUATE RAY PRECAST
 120 CLAY PIT ROAD
 MARSHFIELD, MA 02050
 PHONE # 1-800-440-0009
 FAX # 781-837-4320

CONTRACTOR:

JOB NAME:

DATE:

DRAWING: SRP-ST1.5KM20-EB

DRAWING BY: C. J. SCOTT